

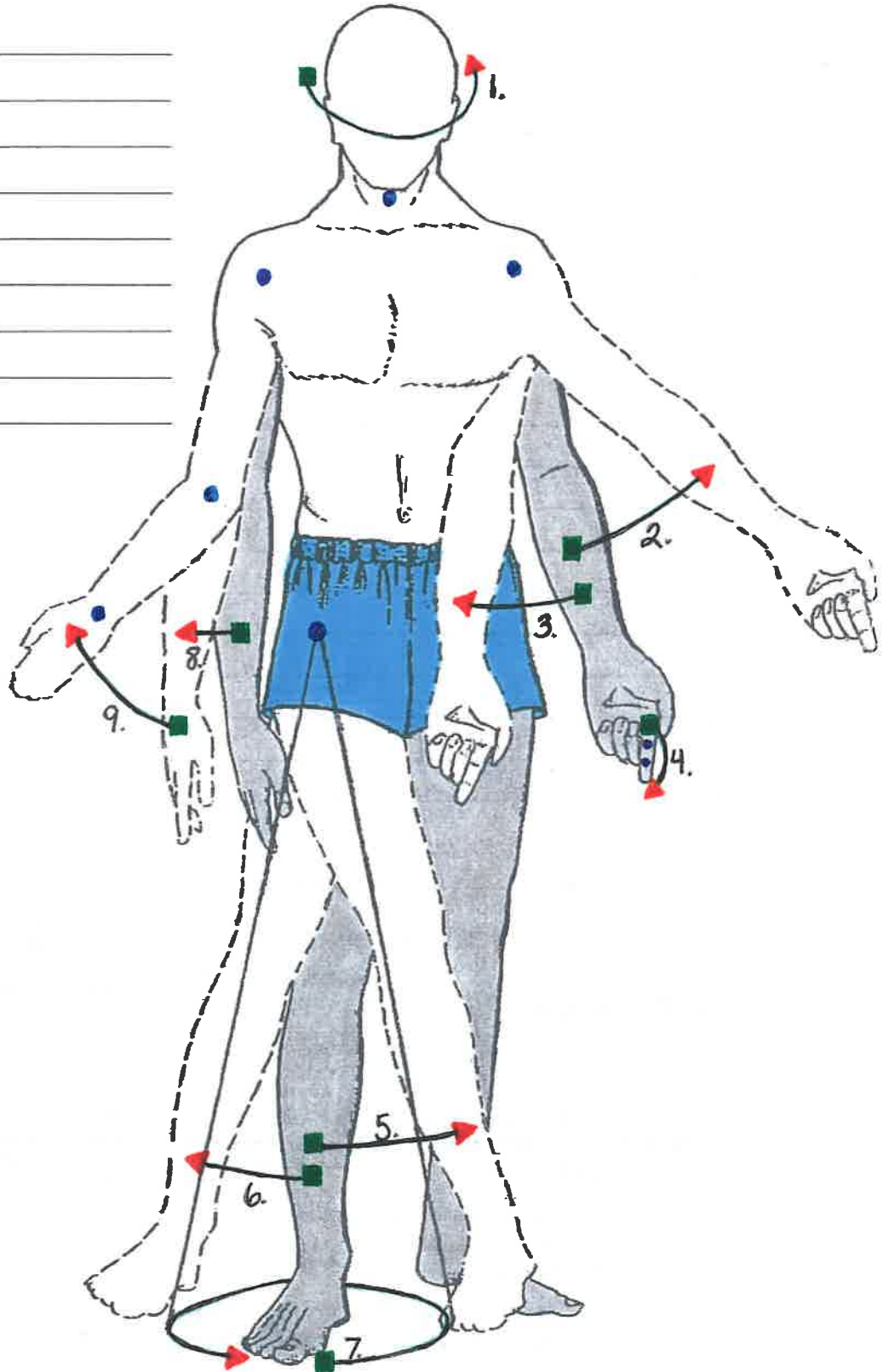
Name: _____

Period: _____

Motions of the Human Body

Identify the motions illustrated by each arrow on the following diagrams. Remember to include the joint/body part name with the motion when applicable (e.g. "elbow flexion" as opposed to just "flexion"). Often, the solid lined body part indicates the starting position and the dotted lined body part the ending position; for the arrows, the dot indicates "start" and the arrowhead "end."

1. _____
2. _____
3. _____
4. _____
5. _____
6. _____
7. _____
8. _____
9. _____



- 10. _____
- 11. _____
- 12. _____
- 13. _____
- 14. _____
- 15. _____
- 16. _____
- 17. _____
- 18. _____
- 19. _____
- 20. _____

