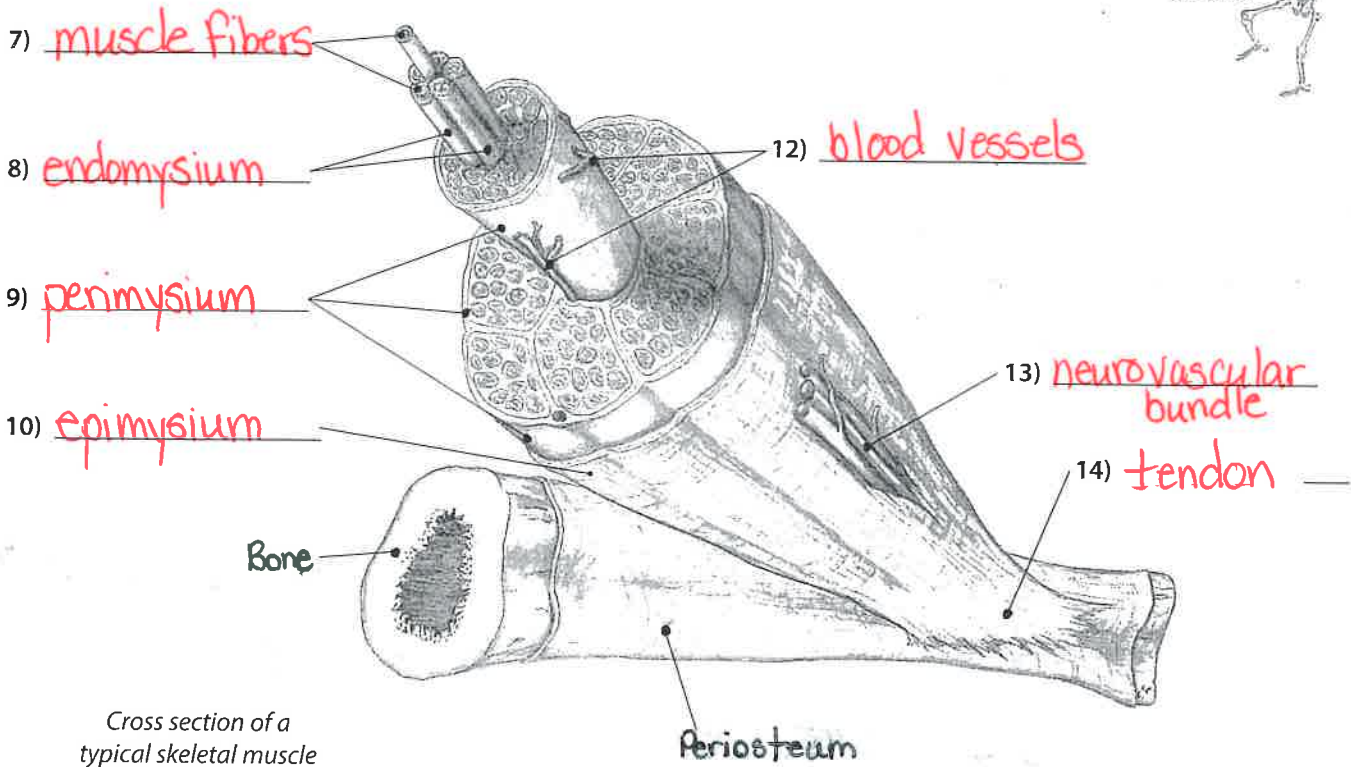


Color Them!

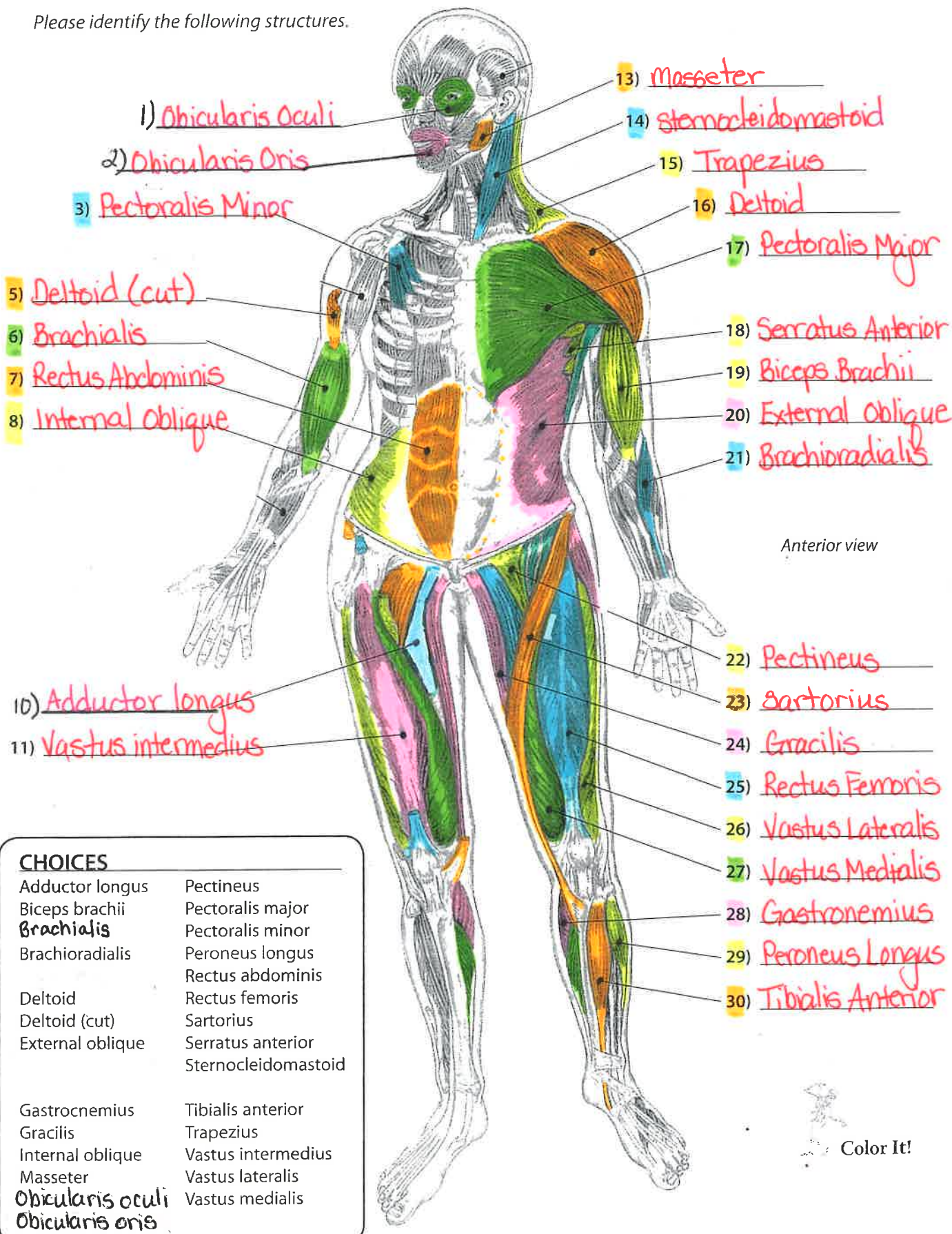


Cross section of a typical skeletal muscle

CHOICES		
Blood vessels	Epimysium	Perimysium
Endomysium	Muscle fibers	Tendon
	Neurovascular bundle	



Please identify the following structures.



Anterior view

CHOICES

Adductor longus	Pectineus
Biceps brachii	Pectoralis major
Brachialis	Pectoralis minor
Brachioradialis	Peroneus longus
	Rectus abdominis
Deltoid	Rectus femoris
Deltoid (cut)	Sartorius
External oblique	Serratus anterior
	Sternocleidomastoid
Gastrocnemius	Tibialis anterior
Gracilis	Trapezius
Internal oblique	Vastus intermedius
Masseter	Vastus lateralis
Orbicularis oculi	Vastus medialis
Orbicularis oris	





Please identify the following structures.

1) Supraspinatus

2) Rhomboids Minor
Major

3) Infraspinatus

4) Teres Major

5) Triceps Brachii

6) Brachioradialis

7) Internal Oblique

8) Gluteus Minimus

9) Piriformis

11) Vastus Lateralis

12) Semimembranosus

16) Trapezius

17) Deltoid

18) Latissimus dorsi

21) Gluteus Maximus

22) Gracilis

23) Biceps Femoris

24) Gastrocnemius

25) Peroneus Longus

Posterior view

CHOICES	
Biceps femoris	Peroneus longus.
Brachioradialis	Piriformis
Deltoid	
	Rhomboids
Gastrocnemius	Semimembranosus
Gluteus maximus	
Gluteus <u>minimus</u>	Supraspinatus
Gracilis	Teres major,
Infraspinatus	Trapezius
Internal oblique	Triceps brachii
Latissimus dorsi	Vastus lateralis

Color It!

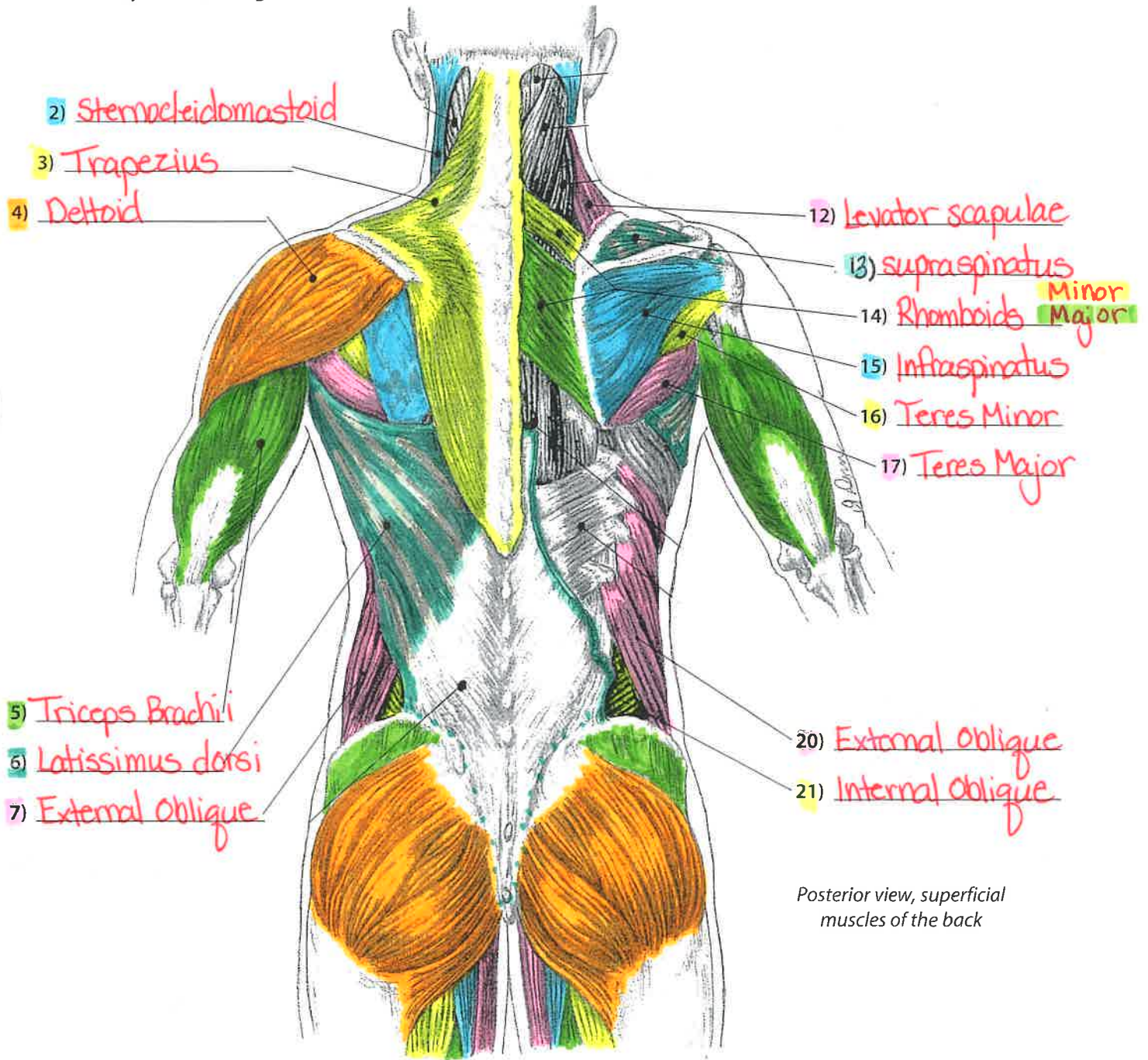


Spine and Thorax

Muscles of the Spine and Thorax #1

Please identify the following structures.

Spine & Thorax



Posterior view, superficial muscles of the back

CHOICES		
Deltoid	Rhomboids	Supraspinatus
External oblique (2)		Teres major
Infraspinatus		Teres minor
Internal oblique		
Latissimus dorsi	Sternocleidomastoid	Trapezius
Levator scapula		Triceps brachii



Pelvis and Thigh

Muscles of the Pelvis and Thigh #1

Please identify the following structures.

1) + 3) = iliopsoas

1) Psoas Major

2) Psoas Minor

3) Iliacus

5) Tensor Fasciae latae

6) Sartorius

7) Iliotibial tract

8) Rectus femoris

9) Vastus lateralis

10) Vastus medialis

11) Pectineus

12) Adductor longus

13) Gracilis

Pelvis & Thigh

Anterior view of right hip and thigh

- CHOICES**
- Adductor longus
 - Gracilis
 - Iliacus**
 - Iliotibial tract
 - Iliopsoas**
 - Pectineus
 - Psoas major
 - Psoas minor
 - Rectus femoris
 - Sartorius
 - Tensor fasciae latae
 - Vastus lateralis
 - Vastus medialis



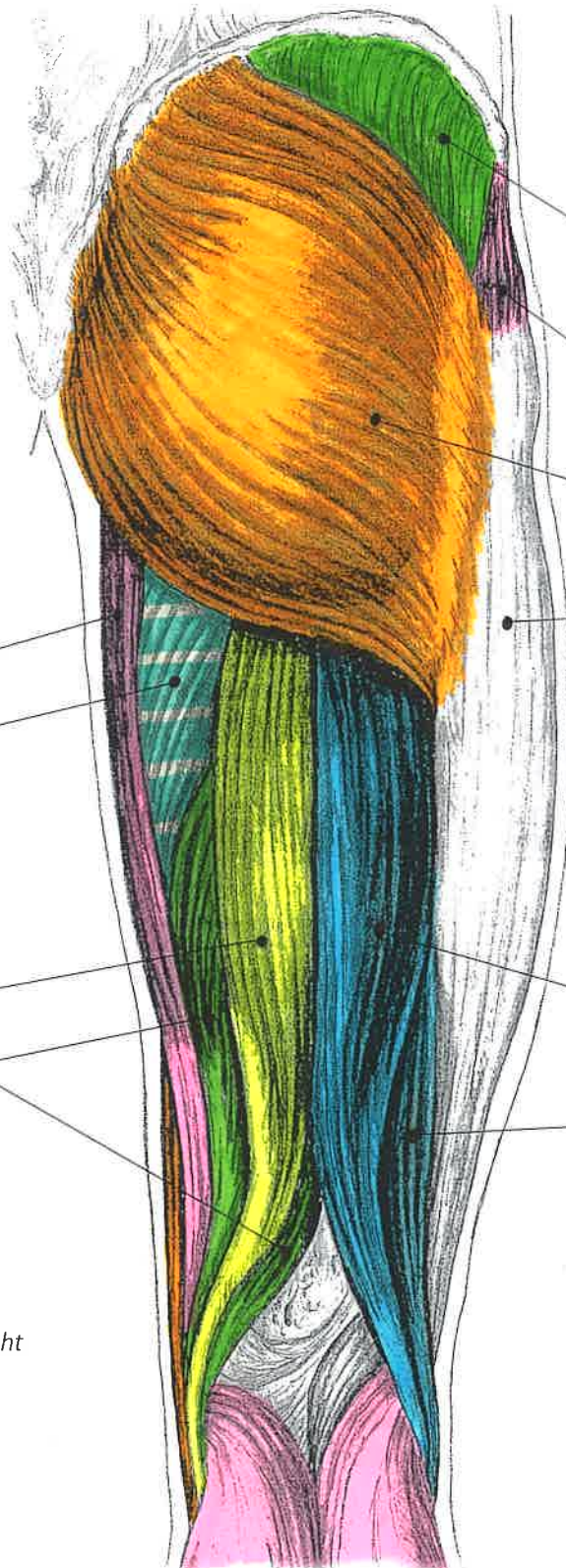
Please identify the following structures.

CHOICES

- Adductor magnus
- Biceps femoris (long head)
- Biceps femoris (short head)
- Gluteus maximus
- Gluteus medius
- Gracilis
- Iliotibial tract
- Semimembranosus
- Semitendinosus
- Tensor fasciae latae

- 1) Gracilis
- 2) Adductor Magnus
- 3) Semitendinosus
- 4) Semimembranosus

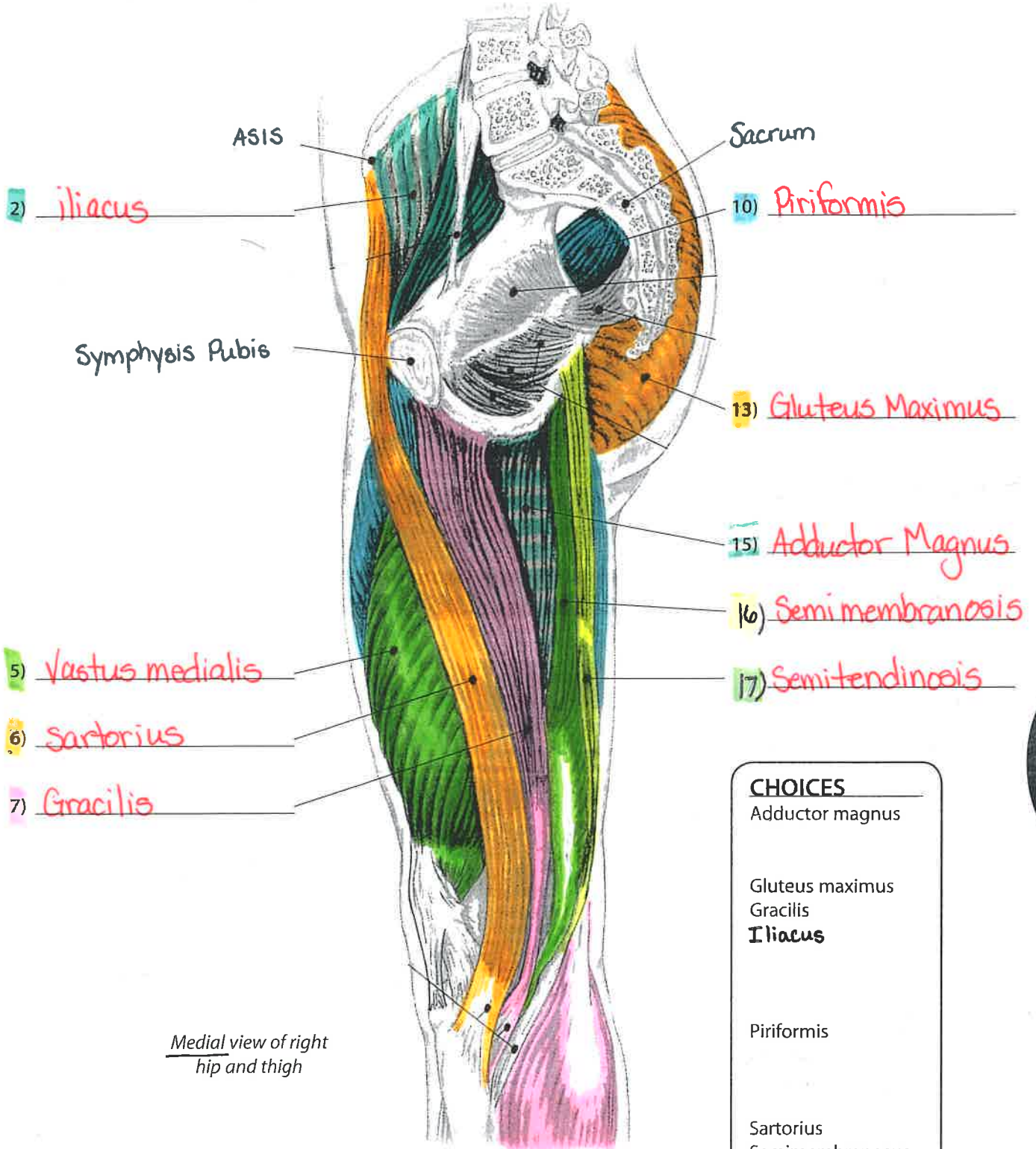
- 5) Gluteus medius
- 6) Tensor fasciae latae
- 7) Gluteus Maximus
- 8) (iliotibial tract)
- 9) Biceps Femoris (long head)
- 10) Biceps Femoris (short head)



Posterior view of right hip and thigh



Please identify the following structures.



Medial view of right hip and thigh

CHOICES

- Adductor magnus
- Gluteus maximus
- Gracilis
- Iliacus**
- Piriformis
- Sartorius
- Semimembranosus
- Semitendinosus
- Vastus medialis

Pelvis & Thigh

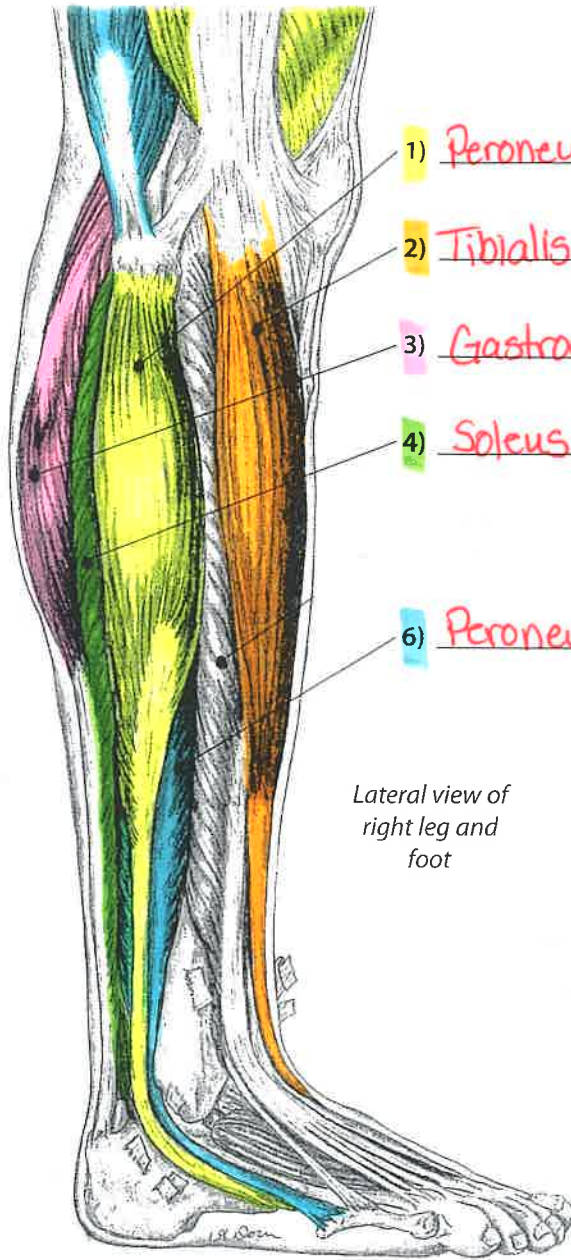


Muscles of the Leg and Foot #2

Please identify the following structures.

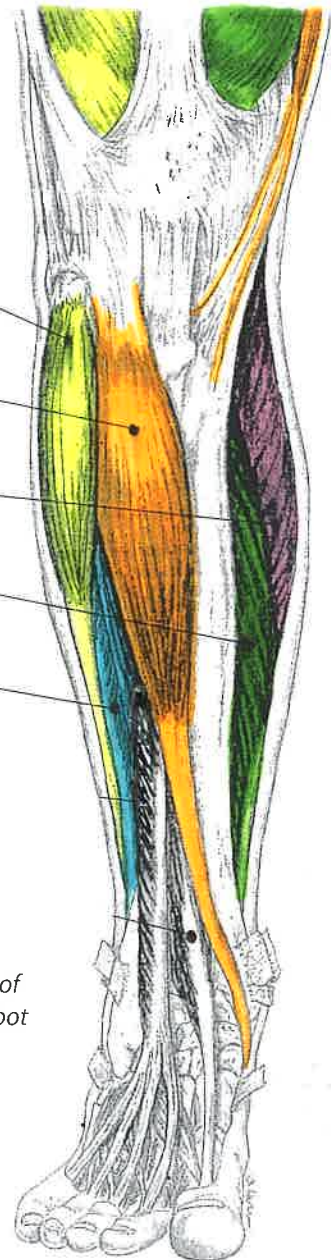
CHOICES

- Gastrocnemius (2)
- Peroneus brevis (2)
- Peroneus longus (2)
- Soleus (2)
- Tibialis anterior (2)



Lateral view of right leg and foot

- 7) Peroneus longus
- 8) Tibialis Anterior
- 9) Gastrocnemius
- 10) Soleus
- 11) Peroneus brevis



Anterior view of right leg and foot