

Please identify the following structures.

1) Which section of the skeleton is highlighted? _____

Anterior view

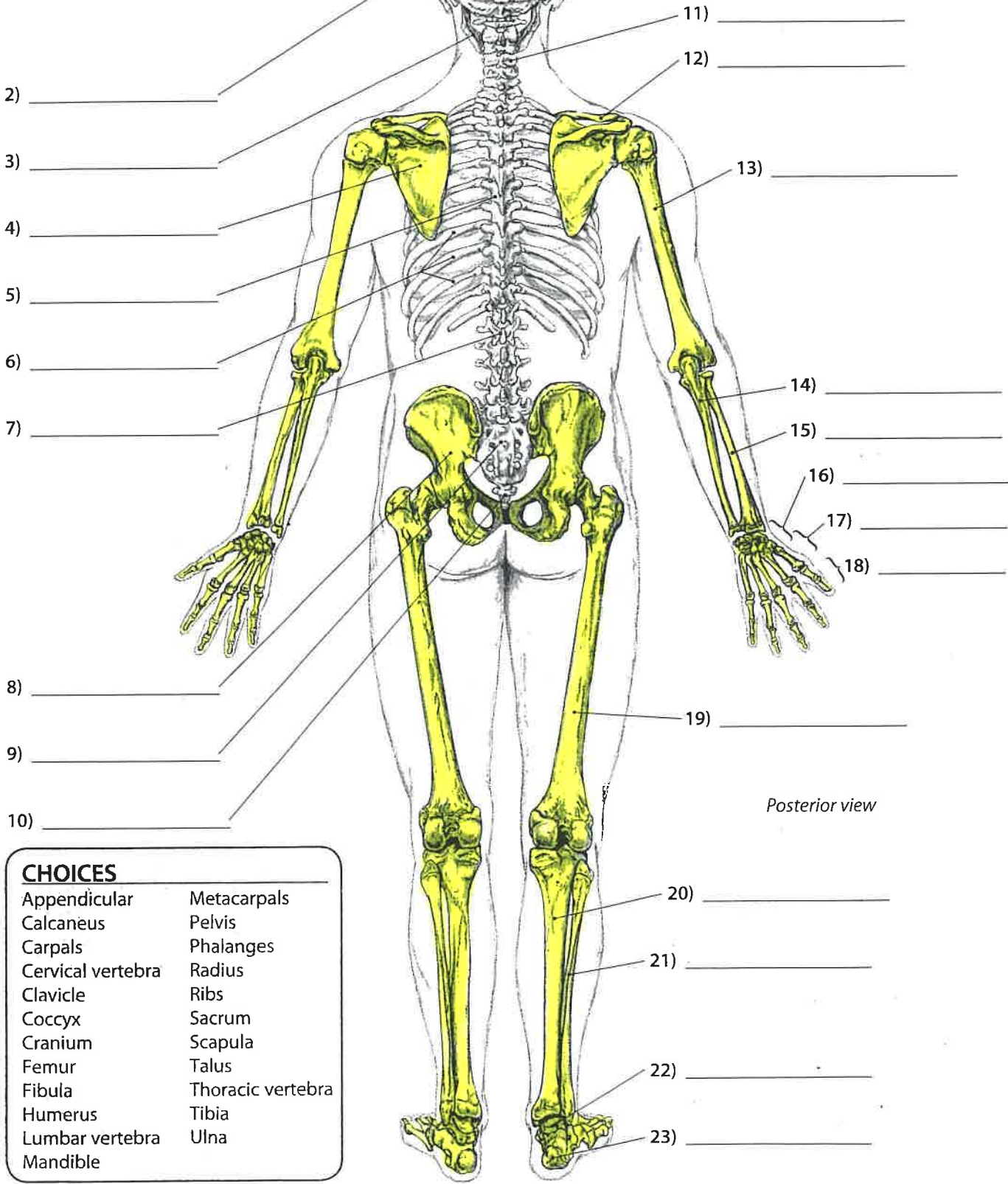
- | CHOICES | |
|-------------------|-------------------|
| Axial | Metatarsals |
| Carpals | Patella |
| Cervical vertebra | Pelvis |
| Clavicle | Phalanges (2) |
| Coccyx | Radius |
| Cranial portion | Ribs |
| Facial portion | Sacrum |
| Femur | Scapula |
| Fibula | Skull |
| Humerus | Sternum (body of) |
| Lumbar vertebra | Tarsals |
| Mandible | Tibia |
| Metacarpals | Ulna |



Navigating the Body Skeletal System #2

Please identify the following structures.

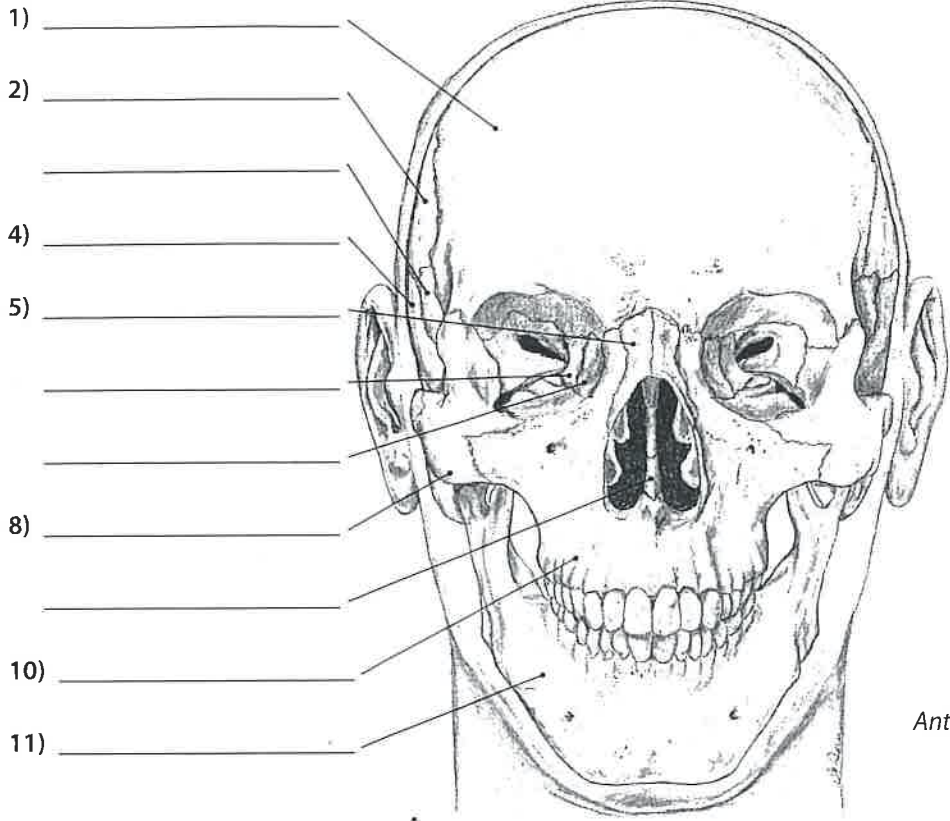
1) Which sections of the skeleton are highlighted? _____



- CHOICES**
- | | |
|-------------------|-------------------|
| Appendicular | Metacarpals |
| Calcaneus | Pelvis |
| Carpals | Phalanges |
| Cervical vertebra | Radius |
| Clavicle | Ribs |
| Coccyx | Sacrum |
| Cranium | Scapula |
| Femur | Talus |
| Fibula | Thoracic vertebra |
| Humerus | Tibia |
| Lumbar vertebra | Ulna |
| Mandible | |



Please identify the following structures.



Anterior view

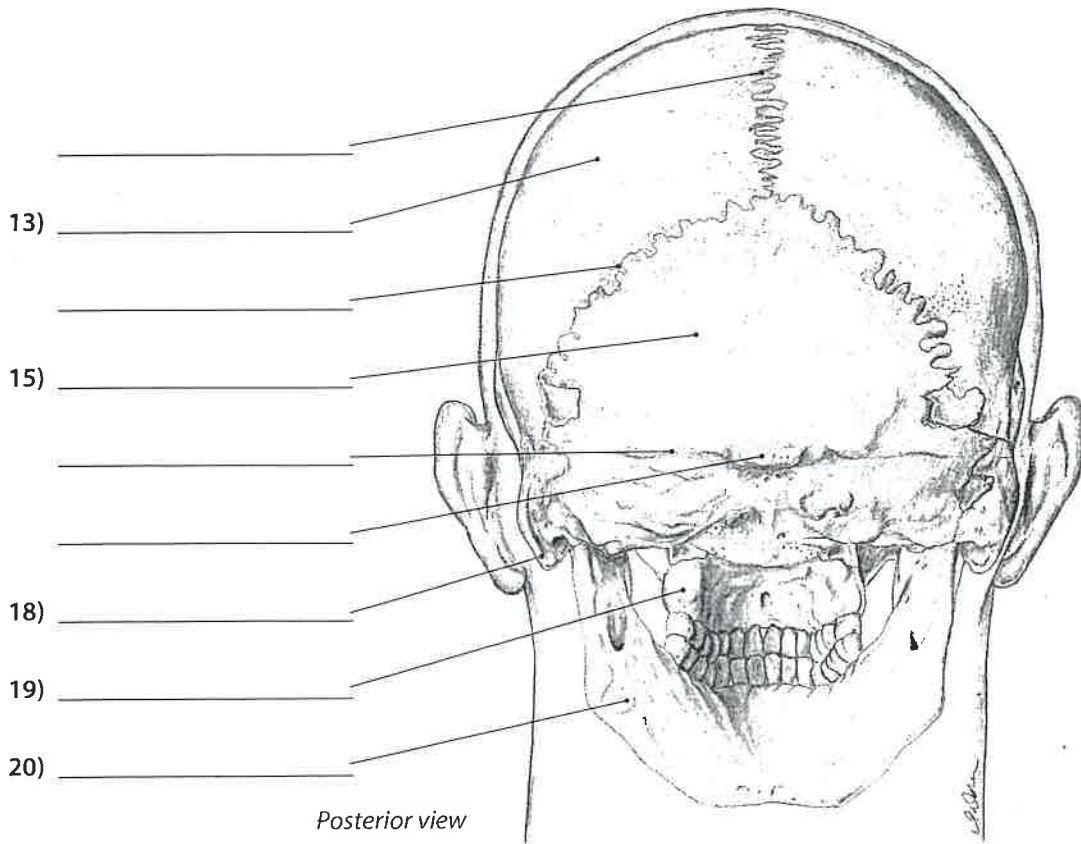
CHOICES

- Ethmoid *
- External occipital protuberance *
- Frontal
- Lacrimal +
- Lambdoid suture *
- Mandible (2)
- Mastoid process
- Maxilla (2)
- Nasal
- Occiput
- Parietal (2)
- Sagittal suture *
- Sphenoid *
- Superior nuchal line *
- Temporal
- Vomer *
- Zygomatic

Color Them



Head, Neck & Face

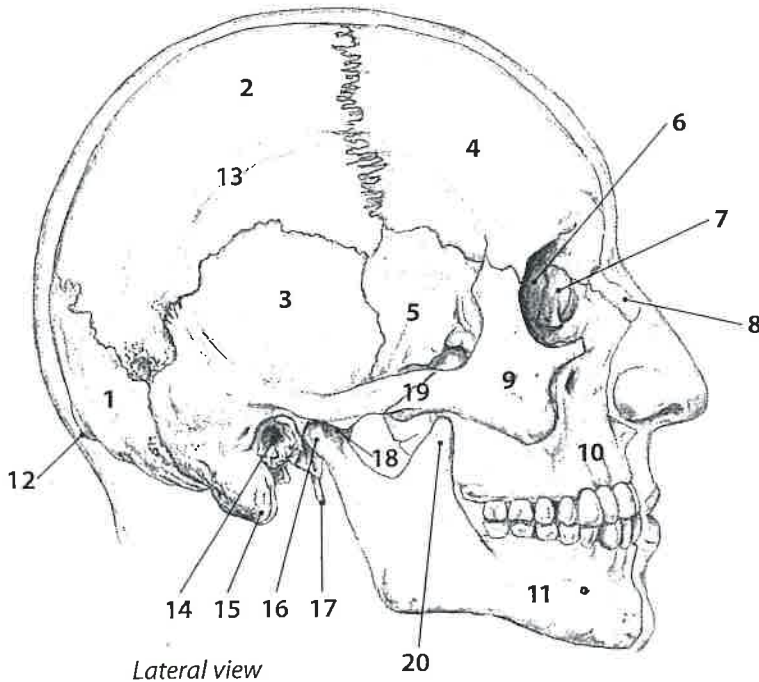


Posterior view



Skull #2

Please identify the following structures. Numbers in **black** indicate bones, numbers in **red** are bony landmarks.



Lateral view

CHOICES 1-20

- ___ Condyle of the mandible*
- ___ Coronoid process*
- ___ Ethmoid*
- ___ External auditory meatus
- ___ External occipital*
- protuberance
- ___ Frontal
- ___ Lacrimal*
- ___ Mandible
- ___ Mastoid process
- ___ Maxilla
- ___ Nasal
- ___ Occiput (**Occipital**)
- ___ Parietal
- ___ Sphenoid*
- ___ Styloid process*
- ___ Temporal
- ___ Temporal lines*
- ___ Temporomandibular joint*
- ___ Zygomatic
- ___ Zygomatic arch*

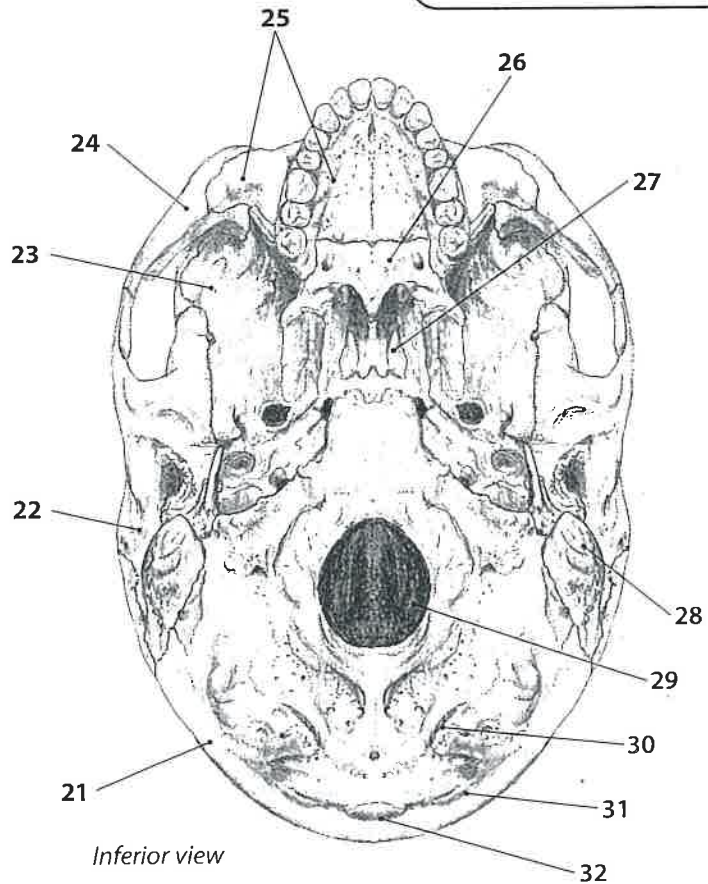
Head, Neck & Face



Color Them!

CHOICES 21-32

- ___ External occipital protuberance*
- ___ Foramen magnum
- ___ Inferior nuchal line*
- ___ Mastoid process
- ___ Maxilla
- ___ Occiput
- ___ Palatine*
- ___ Sphenoid*
- ___ Superior nuchal line*
- ___ Temporal
- ___ Vomer*
- ___ Zygomatic

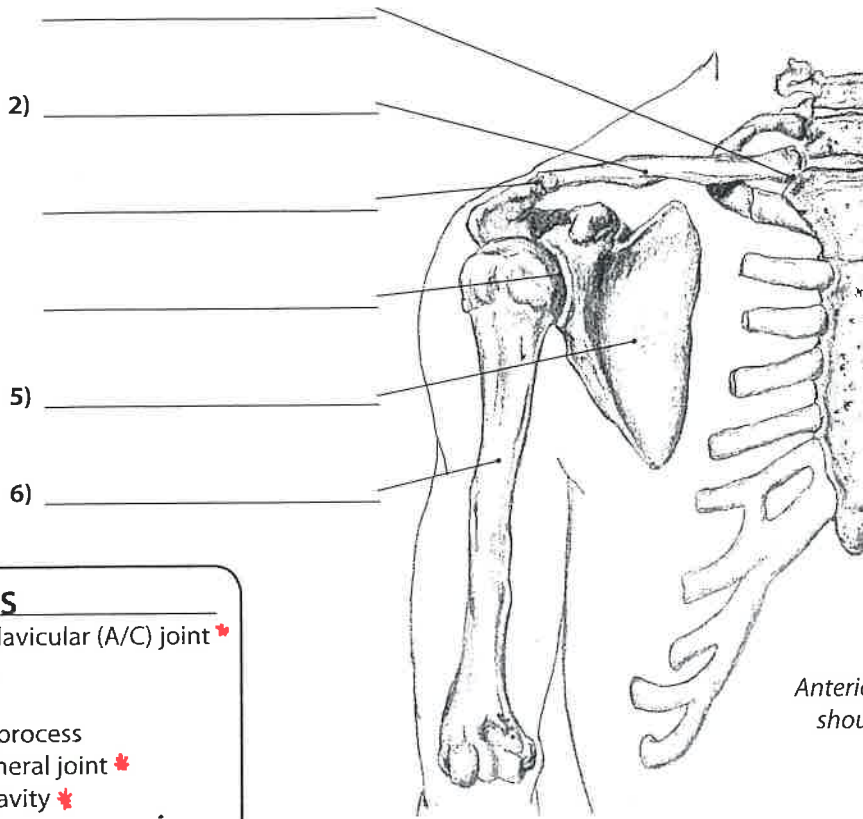


Inferior view



Bones of the Shoulder and Arm #1

Please identify the following structures. Numbers in **black** indicate bones, numbers in **red** are bony landmarks.



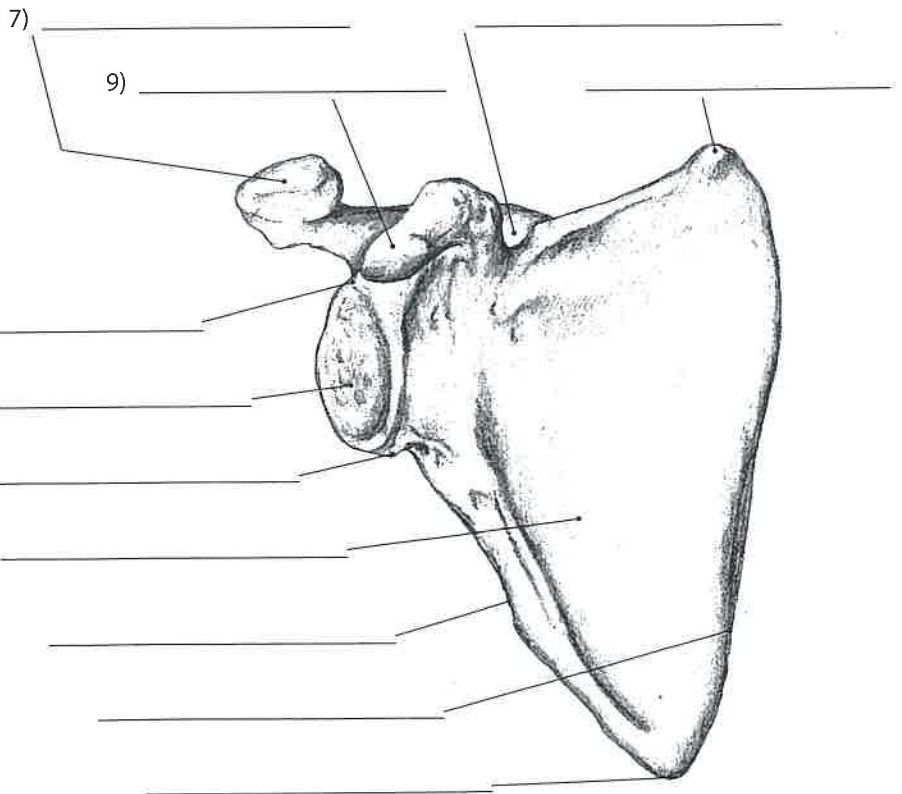
Color It!



Anterior view of right shoulder, ribs cut

CHOICES

- Acromioclavicular (A/C) joint ♣
- Acromion
- Clavicle
- Coracoid process
- Glenohumeral joint ♣
- Glenoid cavity ♣
- Humerus
- Inferior angle ♣
- Infraglenoid tubercle ♣
- Lateral border ♣
- Medial border ♣
- Scapula
- Sternoclavicular (S/C) joint ♣
- Subscapular fossa ♣
- Superior angle ♣
- Superior notch ♣
- Supraglenoid tubercle ♣



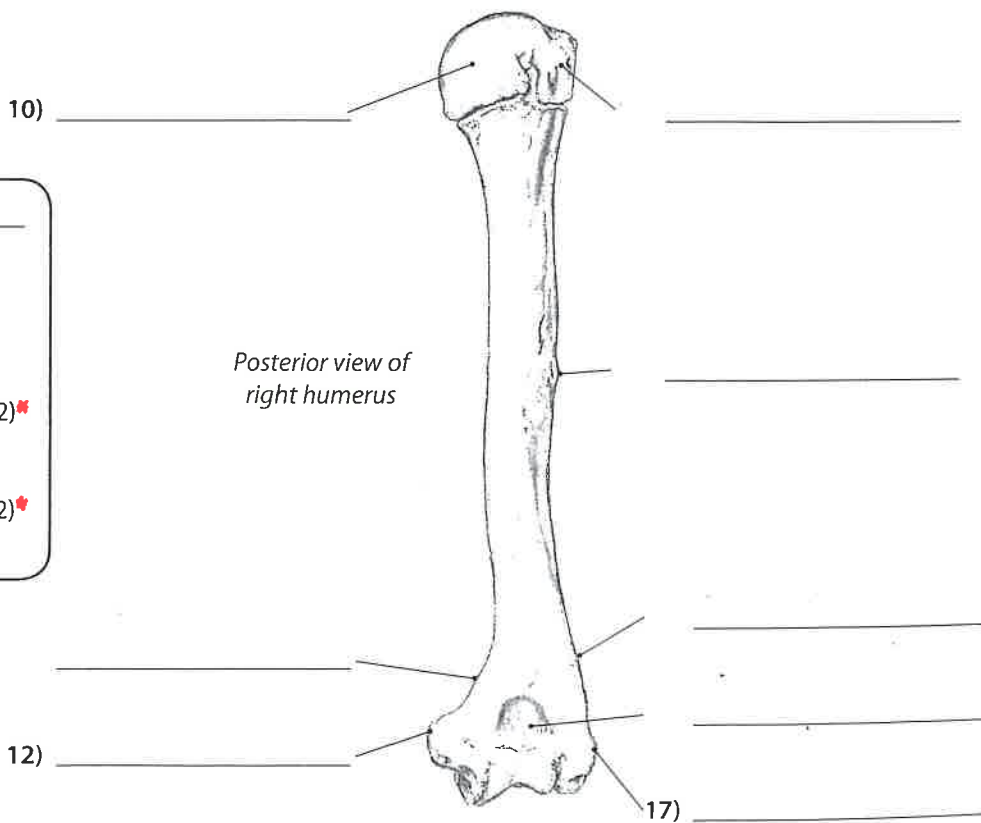
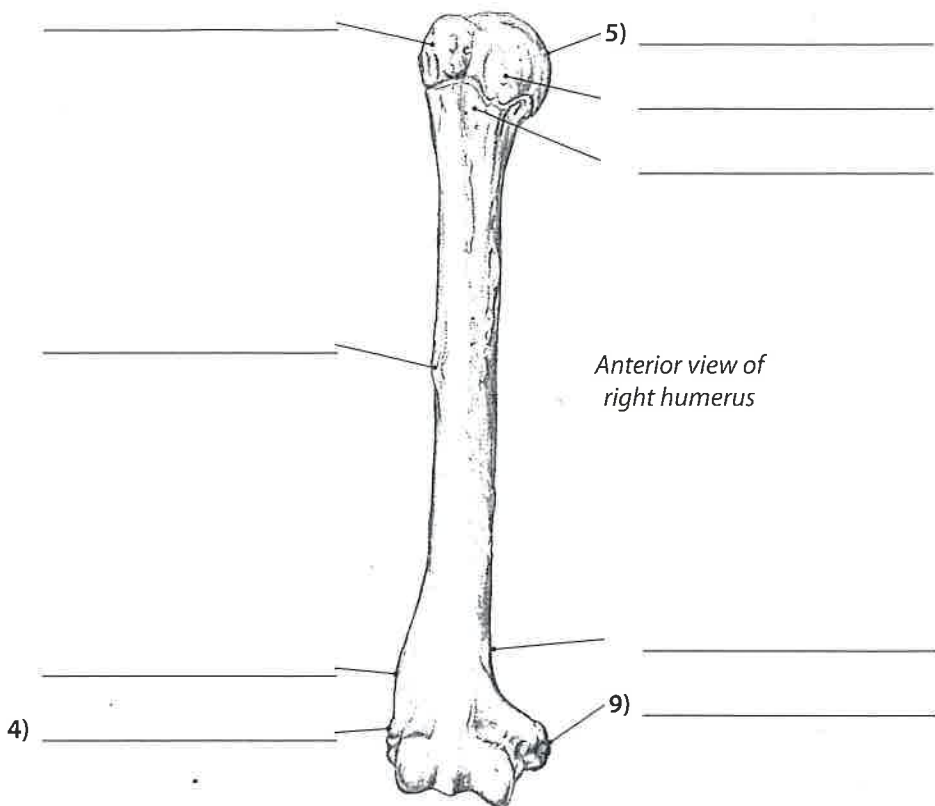
Anterior view of right scapula



Humerus

Please identify the following structures.

Forearm & Hand

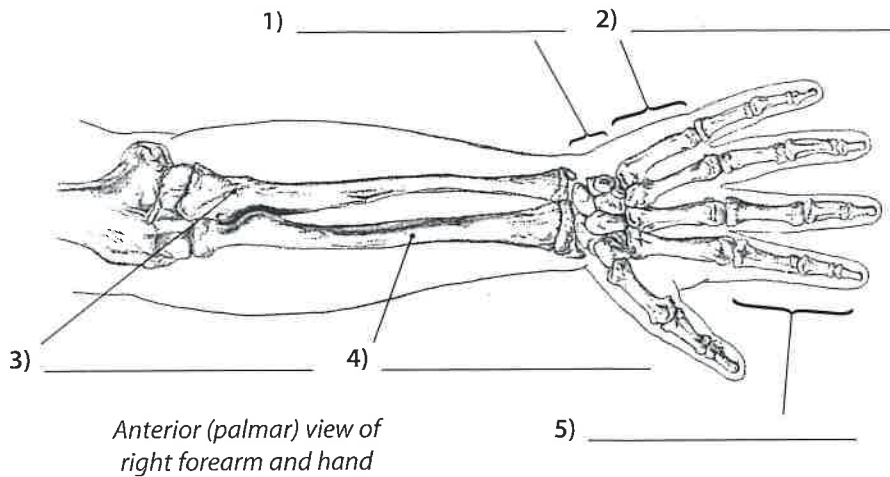


- CHOICES**
- Deltoid tuberosity (2) *
 - Greater tubercle (2) *
 - Head of humerus (2)
 - Intertubercular groove *
 - Lateral epicondyle (2)
 - Lateral supracondylar ridge (2) *
 - Lesser tubercle *
 - Medial epicondyle (2)
 - Medial supracondylar ridge (2) *
 - Olecranon fossa *



Forearm and Hand Ulna and Radius

Please identify the following bones. (Questions 1-5)

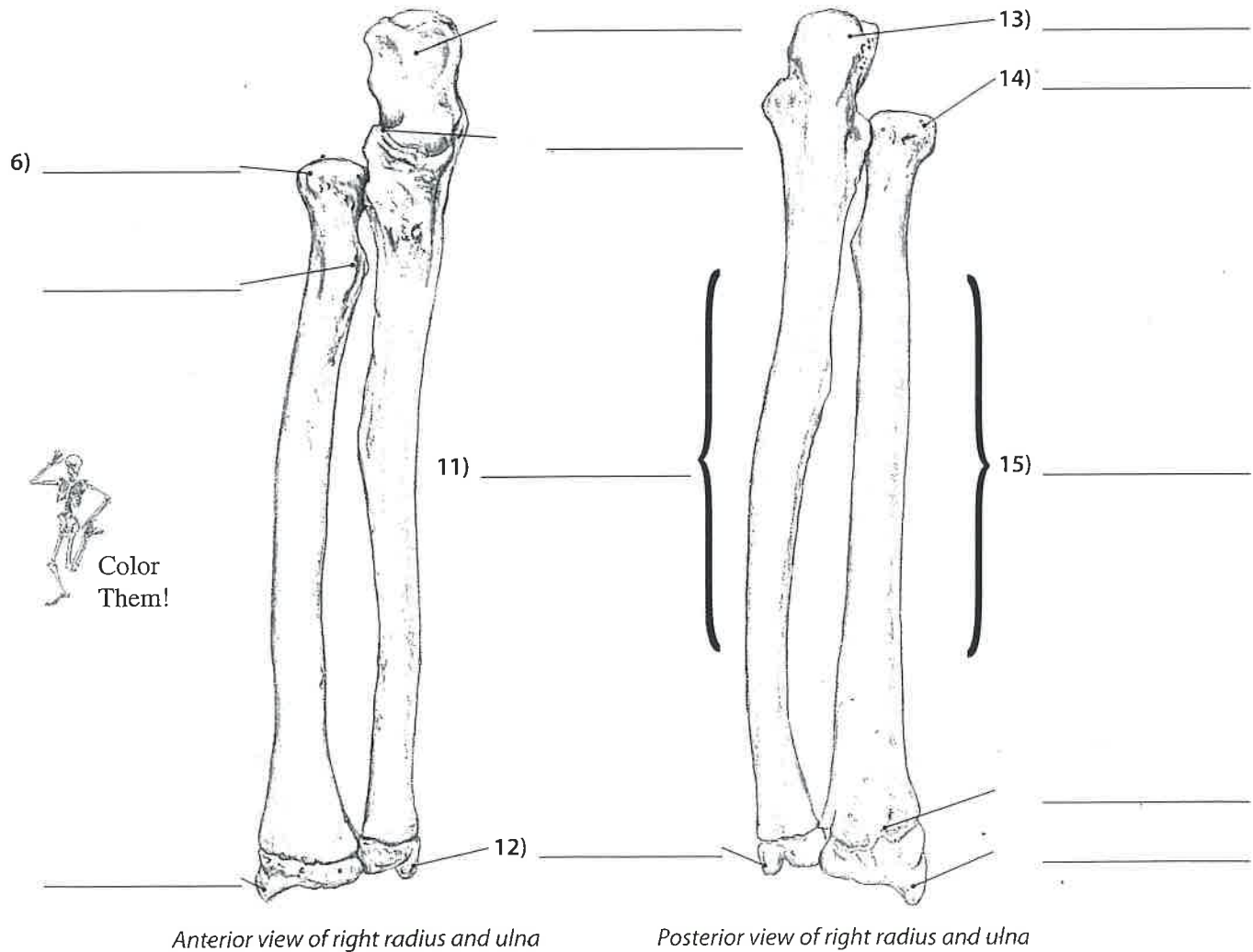


CHOICES

- Carpals
- Coronoid process*
- Head of the radius (2)
- Lister's tubercle*
- Metacarpals
- Olecranon process
- Phalanges
- Radial tuberosity*
- Radius
- Shaft of the radius
- Shaft of the ulna
- Styloid process of the radius (2)*
- Styloid process of the ulna
- Trochlear notch*
- Ulna

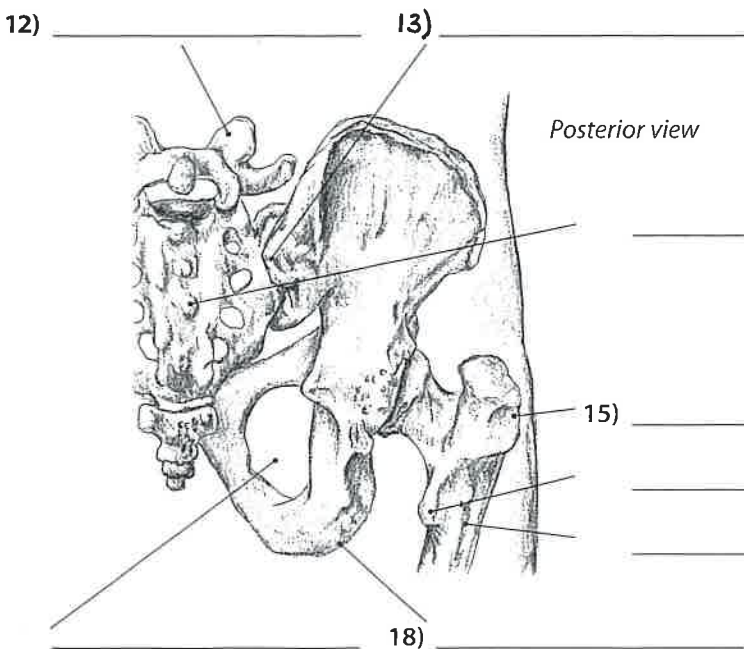
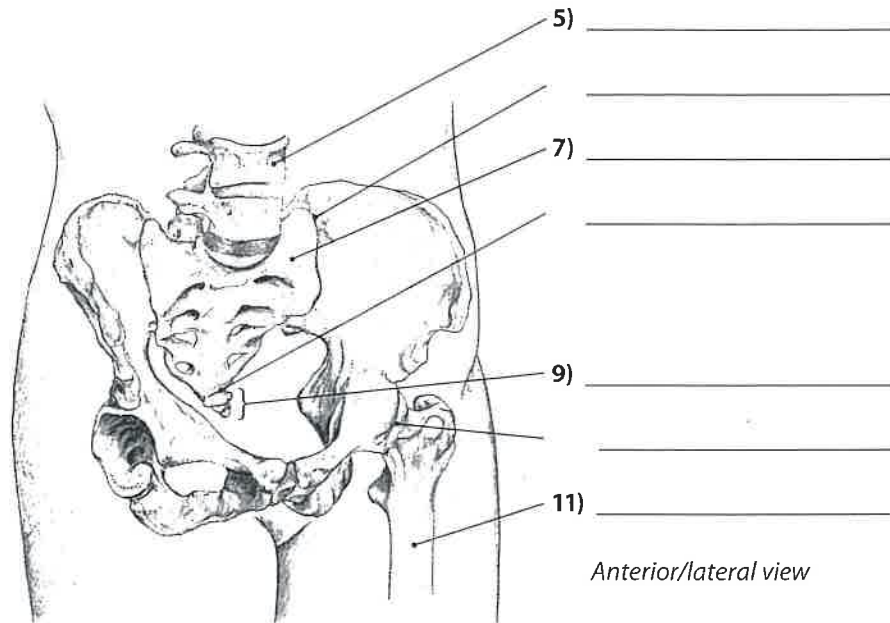
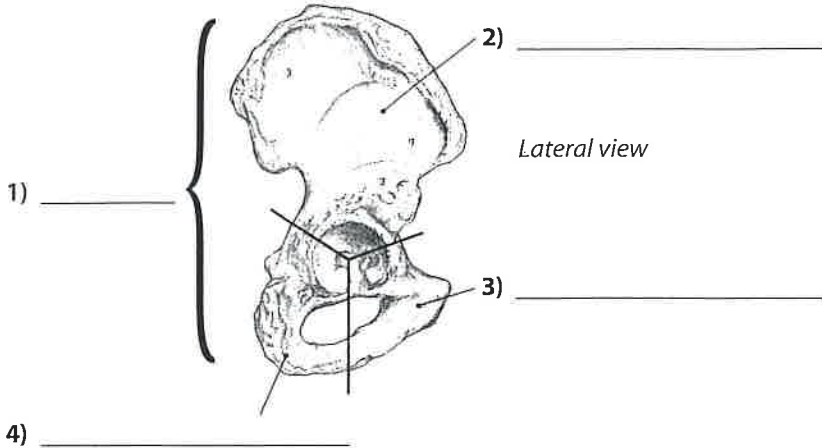
Forearm & Hand

Please identify the following bony landmarks. (Questions 6-17)





Please identify the following structures.
Numbers in **black** indicate bones,
numbers in **red** are bony landmarks.

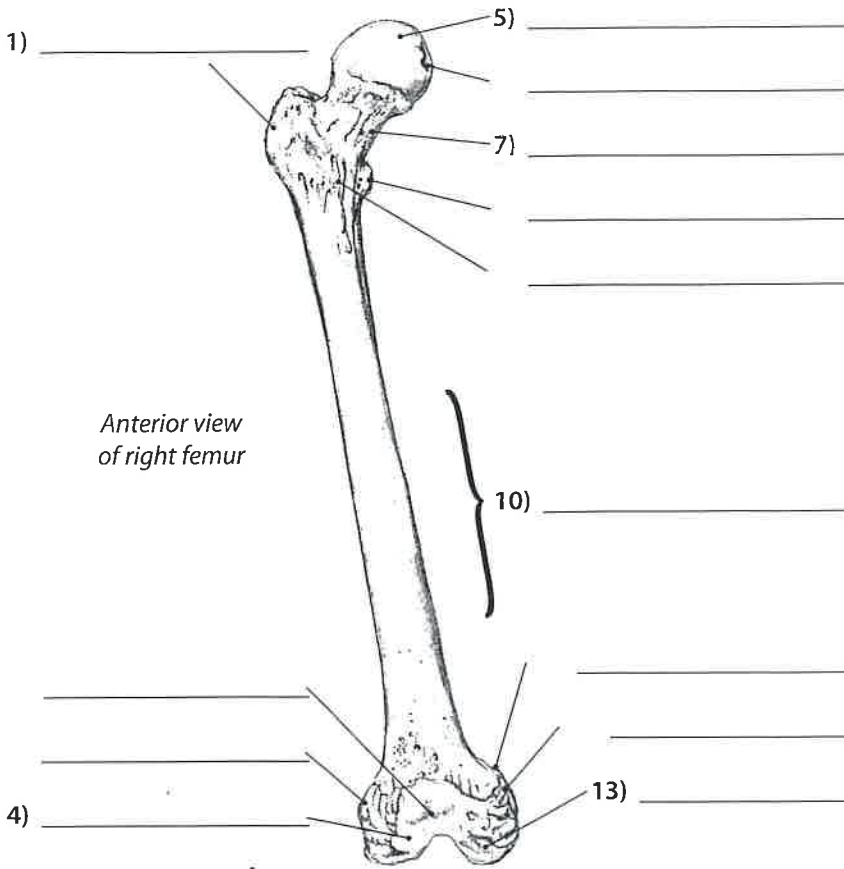


CHOICES

- Coccyx
- Coxal (hip) joint*
- Femur
- Fifth lumbar vertebra
- Gluteal tuberosity*
- Greater trochanter
- ~~Hip~~ Pelvis
- Ilium
- Ischial tuberosity
- Ischium
- Lesser trochanter*
- Lumbar vertebra
- Median sacral crest*
- Obturator foramen*
- Posterior superior iliac spine (PSIS)
- Pubis
- Sacrococcygeal joint*
- Sacroiliac joint*
- Sacrum



Femur

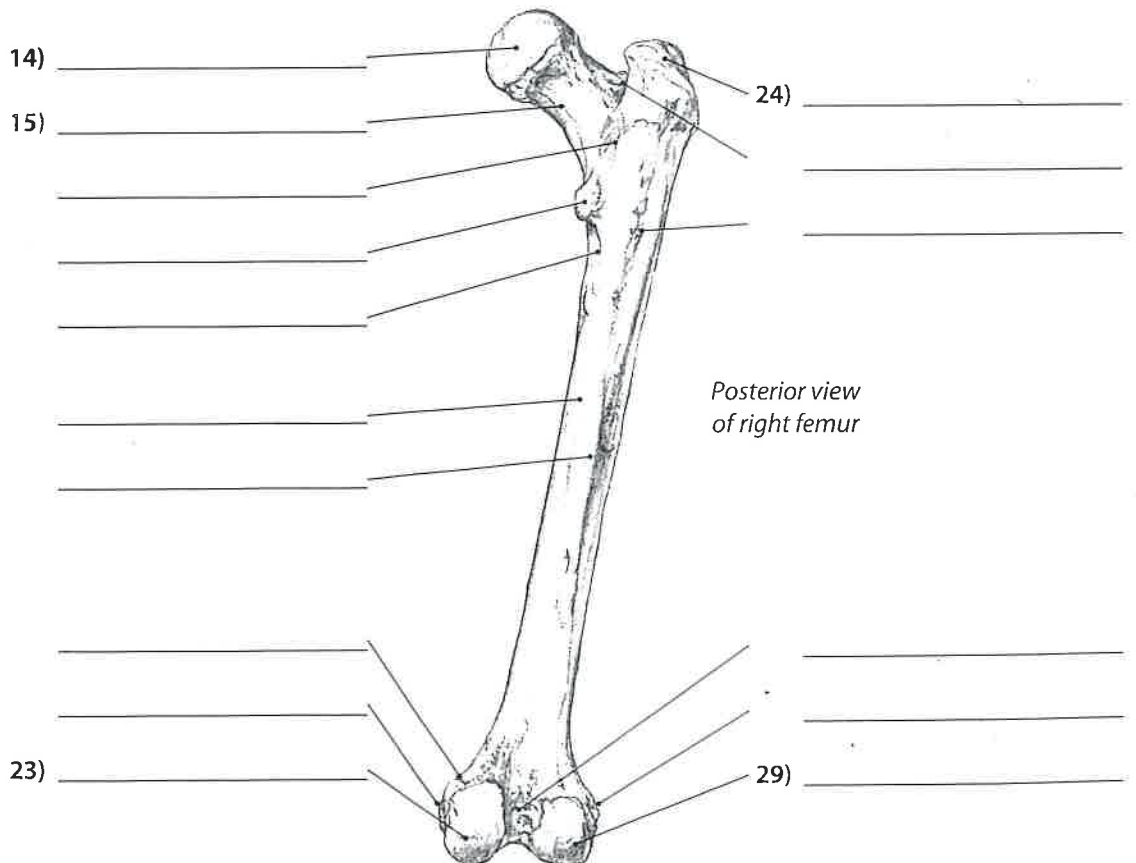


Anterior view of right femur

Please identify the following structures.

CHOICES

- Adductor tubercle (2) *
- Fovea of head *
- Gluteal tuberosity *
- Greater trochanter (2)
- Head (2) of Femur
- Intercondylar fossa *
- Intertrochanteric crest *
- Intertrochanteric line *
- Lateral condyle (2)
- Lateral epicondyle (2) *
- Lateral lip of linea aspera *
- Lesser trochanter (2) *
- Medial condyle (2)
- Medial epicondyle (2) *
- Medial lip of linea aspera *
- Neck (2) of Femur
- Patellar surface *
- Pectineal line *
- Shaft of Femur
- Trochanteric fossa *



Posterior view of right femur

Leg and Foot

Bones of the Knee, Leg and Foot

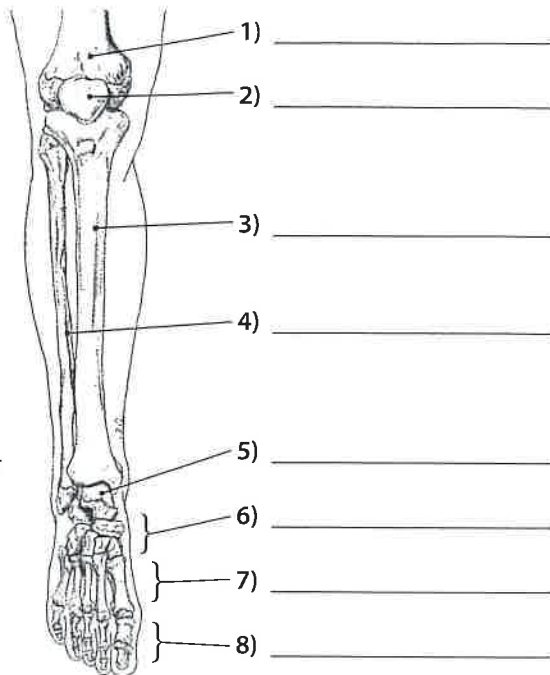


Please identify the following **bones**.
(Questions 1-8)



Color Them!

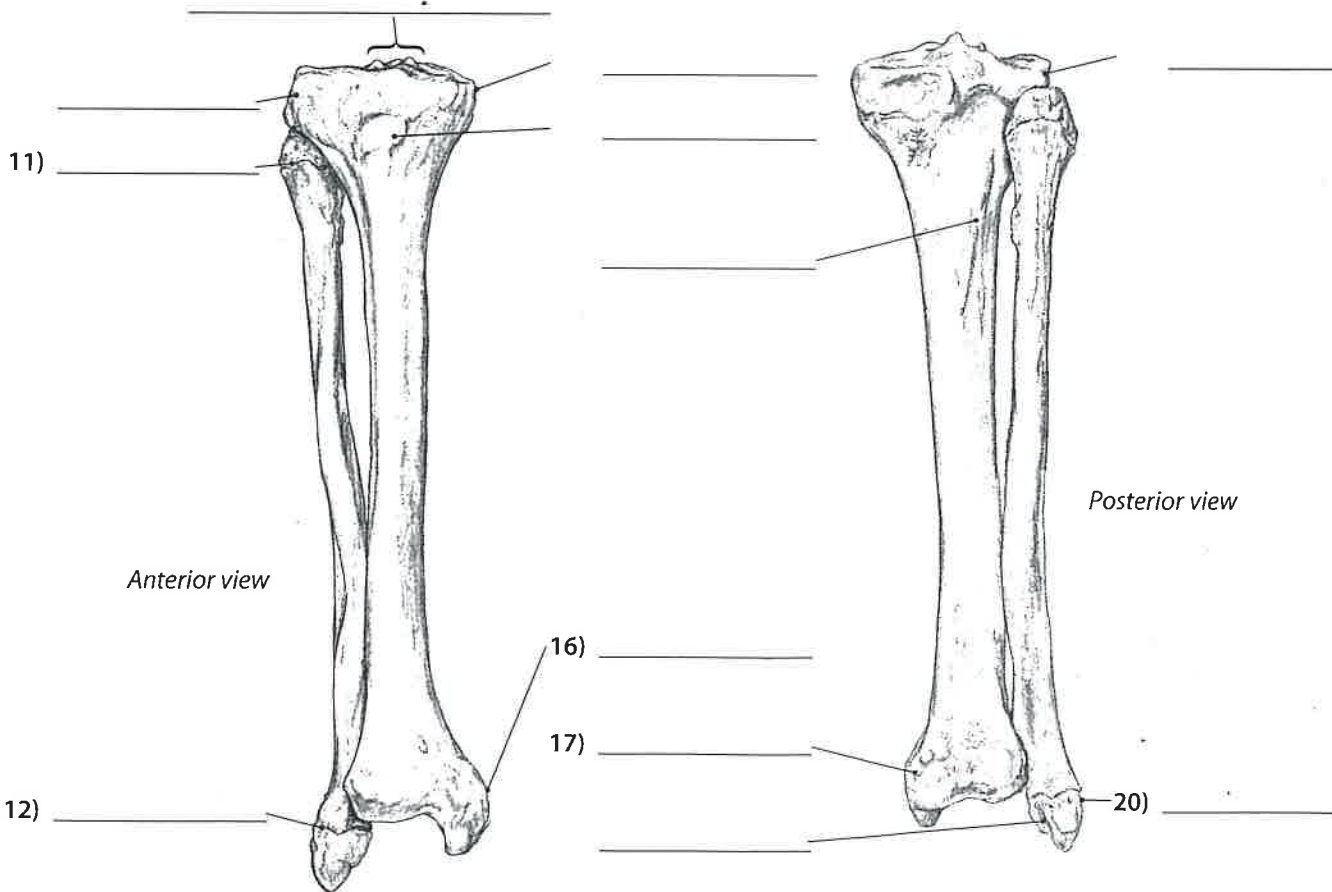
Anterior view of right knee, leg and foot, foot plantar flexed



CHOICES

- Femur
- Fibula
- Fossa of lateral malleolus*
- Head of the fibula
- Lateral condyle (2)*
- Lateral malleolus (2)
- Medial and lateral intercondylar tubercles*
- Medial condyle*
- Medial malleolus (2)
- Metatarsals
- Patella
- Phalanges
- Soleal line*
- Talus
- Tarsals
- Tibia
- Tibial tuberosity*

Please identify the following **bony landmarks**. (Questions 9-20)

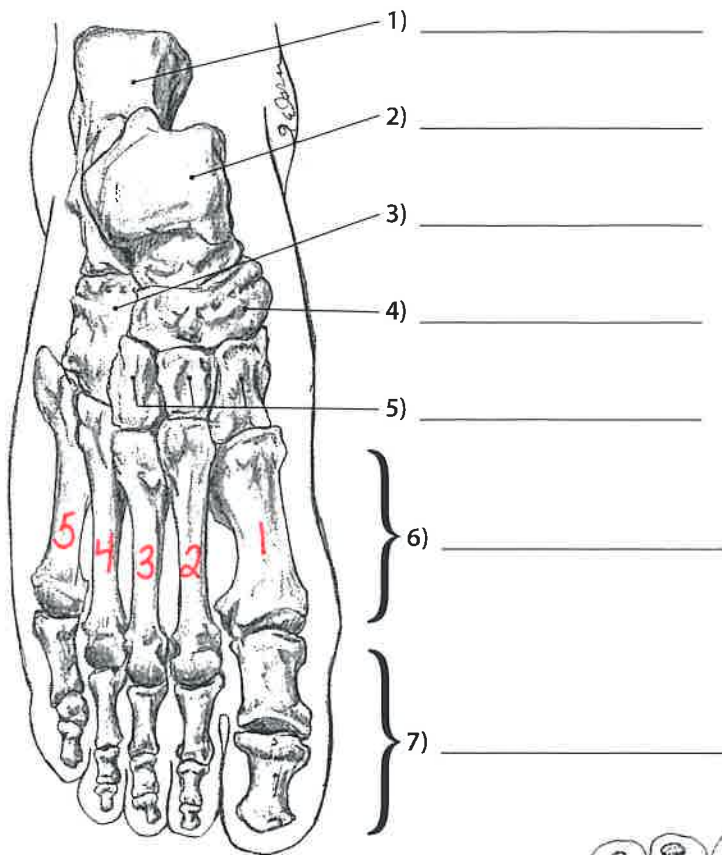


Leg & Foot



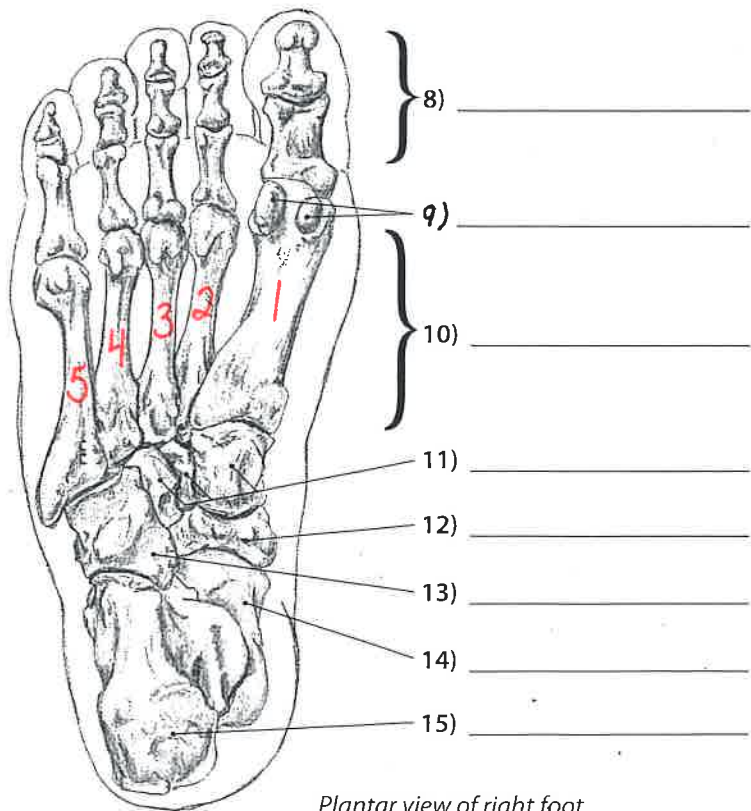
Leg and Foot Bones of the Foot

Please identify the following structures.



Dorsal view of right foot

- CHOICES**
- Calcaneus (2)
 - Cuboid (2)
 - Cuneiforms (2)
 - Metatarsals (2)
 - Navicular (2)
 - Phalanges (2)
 - Sesamoid bones
 - Talus (2)



Plantar view of right foot