



Please identify the following structures.

1) Which section of the skeleton is highlighted? Axial

2) Skull { 3) Cranial Port.
4) Facial Port.
5) Mandible

6) Cervical Vertebra

7) Clavicle

8) Sternum (Body)

9) Humerus

10) Ulna

11) Radius

12) Carpals

13) Metacarpals

14) Phalanges

15) Scapula

16) Ribs (true)

17) Lumbar vertebra (L2)

18) Pelvis (Ilium)

19) Sacrum

20) Coccyx

21) Femur

22) Patella

23) Tibia

24) Fibula

25) Tarsals

26) Metatarsals

27) Phalanges

Anterior view

CHOICES

| | |
|-------------------|---------------|
| Axial | Metatarsals |
| Carpals | Patella |
| Cervical vertebra | Pelvis |
| Clavicle | Phalanges (2) |
| Coccyx | Radius |
| Cranial portion | Ribs |
| Facial portion | Sacrum |
| Femur | Scapula |
| Fibula | Skull |
| Humerus | Sternum |
| Lumbar vertebra | Tarsals |
| Mandible | Tibia |
| Metacarpals | Ulna |



Please identify the following structures.

1) Which sections of the skeleton are highlighted? Appendicular

2) Cranium (Parietal Bone)

3) Mandible

4) Scapula

5) Thoracic Vert. (T₆)

6) Ribs (false)

7) Lumbar Vert. (L₁)

8) Pelvis

9) Sacrum

10) Coccyx

11) Cervical Vert. (C₄)

12) Clavicle

13) Humerus

14) Ulna

15) Radius

16) Carpals

17) Metacarpals

18) Phalanges

19) Femur

20) Tibia

21) Fibula

22) Talus

23) Calcaneus

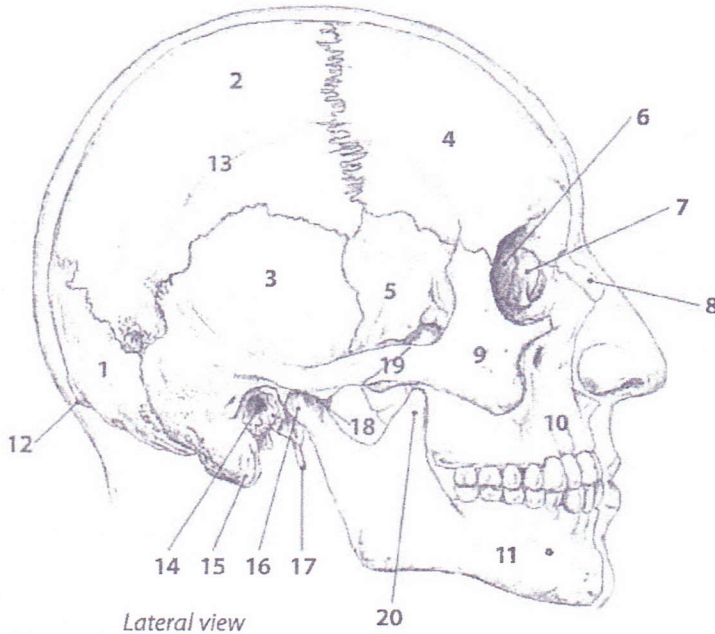
Posterior view

CHOICES

- | | |
|-------------------|-------------------|
| Appendicular | Metacarpals |
| Calcaneus | Pelvis |
| Carpals | Phalanges |
| Cervical vertebra | Radius |
| Clavicle | Ribs |
| Coccyx | Sacrum |
| Cranium | Scapula |
| Femur | Talus |
| Fibula | Thoracic vertebra |
| Humerus | Tibia |
| Lumbar vertebra | Ulna |
| Mandible | |



Please identify the following structures. Numbers in **black** indicate bones, numbers in **red** are bony landmarks.



Lateral view

CHOICES 1-20

- * **16** Condyle of the mandible
- * **20** Coronoid process
- 6** Ethmoid
- 14** External auditory meatus
- * **12** External occipital protuberance
- 4** Frontal
- 7** Lacrimal
- 11** Mandible
- 15** Mastoid process
- 10** Maxilla
- 8** Nasal
- 1** Occiput (**Occipital**)
- 2** Parietal
- 5** Sphenoid
- * **17** Styloid process
- 3** Temporal
- * **13** Temporal lines
- * **18** Temporomandibular joint
- 9** Zygomatic
- 19** Zygomatic arch

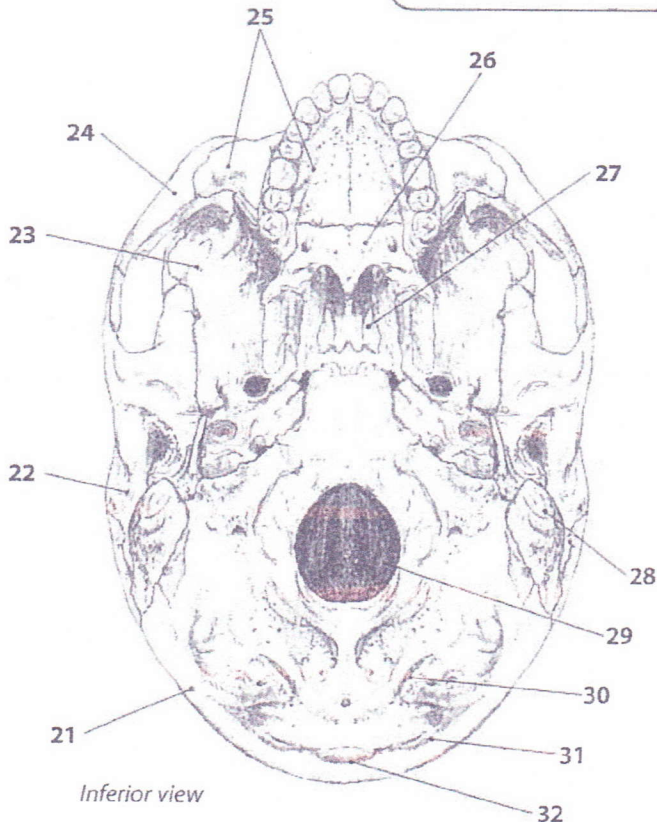
Head, Neck & Face



Color Them!

CHOICES 21-32

- * **32** External occipital protuberance
- 29** Foramen magnum
- * **30** Inferior nuchal line
- 28** Mastoid process
- 25** Maxilla
- 21** Occiput (**Occipital**)
- 26** Palatine
- 23** Sphenoid
- * **31** Superior nuchal line
- 22** Temporal
- 27** Vomer
- 24** Zygomatic

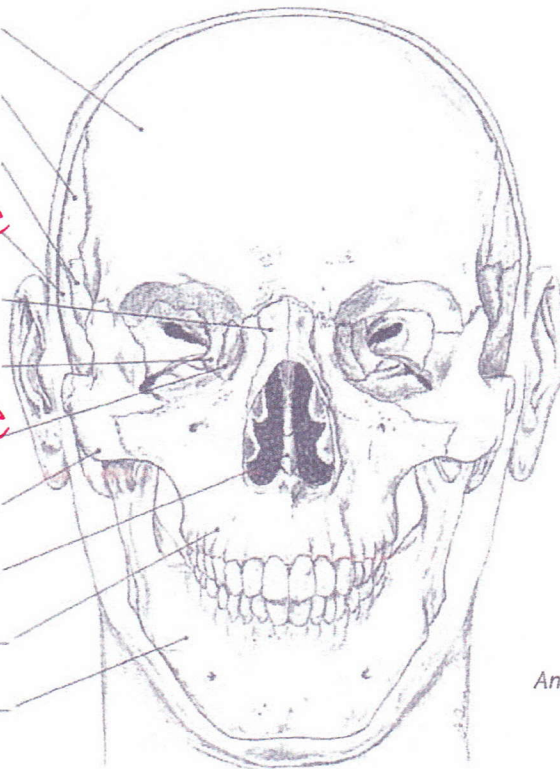


Inferior view



Please identify the following structures.

- 1) Frontal Bone
- 2) Parietal Bone
- 3) Sphenoid
- 4) Temporal Bone
- 5) Nasal Bone
- 6) Ethmoid
- 7) Lacrimal Bone
- 8) Zygomatic
- 9) Vomer
- 10) Maxilla
- 11) Mandible



Anterior view

CHOICES

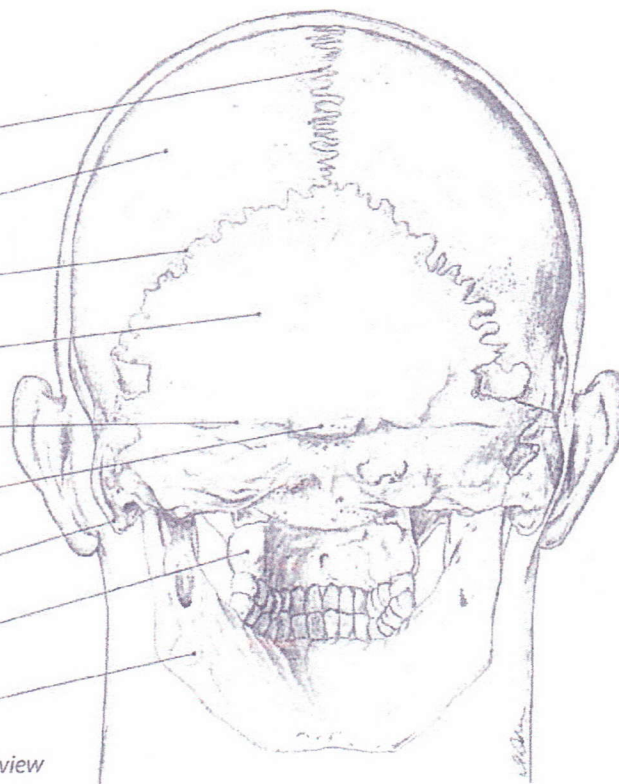
- Ethmoid
- External occipital protuberance
- Frontal
- Lacrimal
- Lambdoid suture
- Mandible (2)
- Mastoid process
- Maxilla (2)
- Nasal
- Occiput
- Parietal (2)
- Sagittal suture
- Sphenoid
- Superior nuchal line
- Temporal
- Vomer
- Zygomatic

Color Them



Head, Neck & Face

- 12) Sagittal Suture
- 13) Parietal
- 14) Lambdoid Suture
- 15) Occiput
- 16) Sup. Nuchal Line
- 17) Ext. Occipital Protuberance
- 18) Mastoid Process
- 19) Maxilla
- 20) Mandible



Posterior view



Shoulder and Arm

Bones of the Shoulder and Arm #1

Please identify the following structures. Numbers in **black** indicate bones, numbers in **red** are bony landmarks.

1) SC Joint

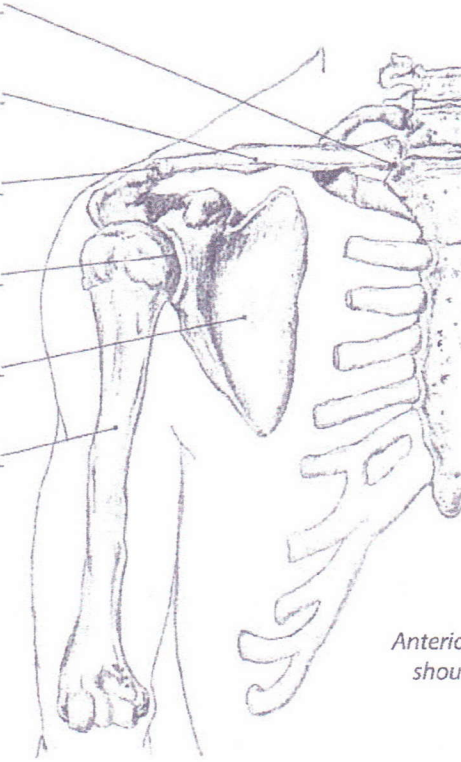
2) Clavicle

3) AC Joint

4) GH Joint

5) Scapula

6) Humerus



Anterior view of right shoulder, ribs cut

Color It!



CHOICES

- Acromioclavicular (A/C) joint
- Acromion
- Clavicle
- Coracoid process
- Glenohumeral joint
- Glenoid cavity
- Humerus
- Inferior angle
- Infraglenoid tubercle
- Lateral border
- Medial border
- Scapula
- Sternoclavicular (S/C) joint
- Subscapular fossa
- Superior angle
- Superior notch
- Supraglenoid tubercle

7) Acromion Proc.

8) Superior Notch

9) Coracoid Proc.

10) Superior Angle

11) Supraglenoid Tuber.

12) Glenoid Fossa

13) Infraglenoid Tuber.

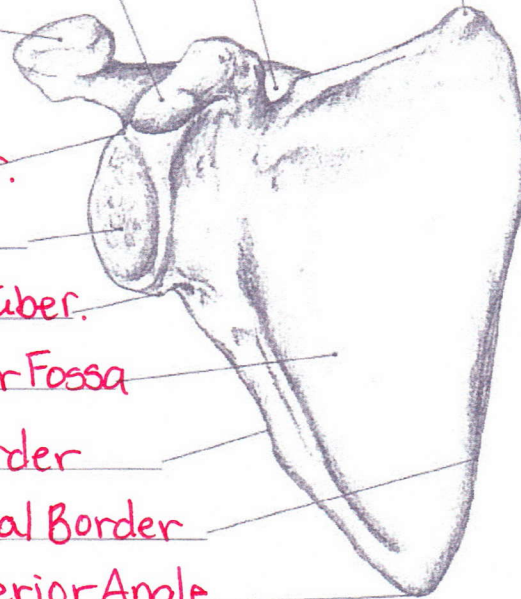
14) Subscapular Fossa

15) Lat. Border

Anterior view of right scapula

16) Medial Border

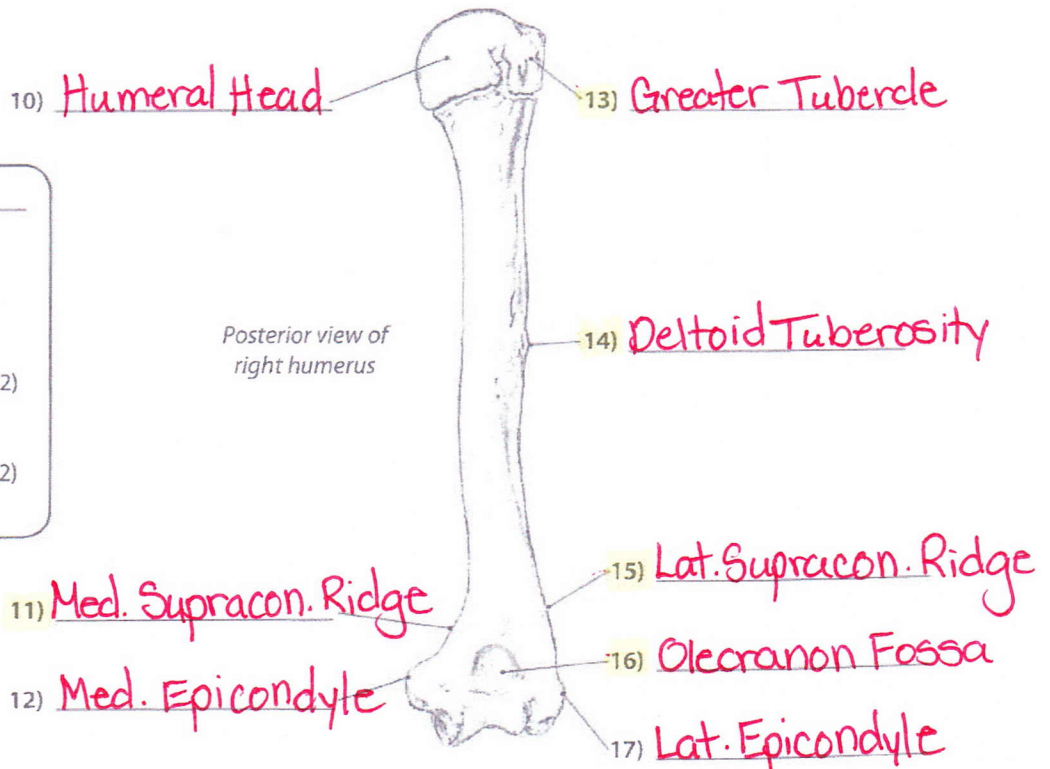
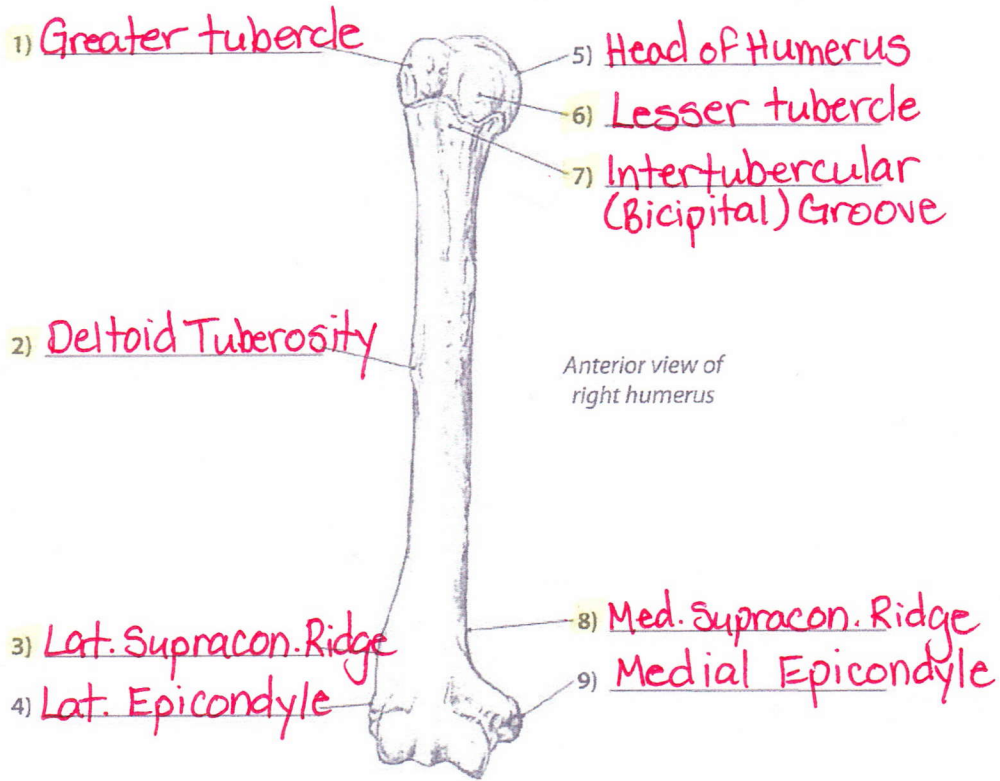
17) Inferior Angle





Please identify the following structures.

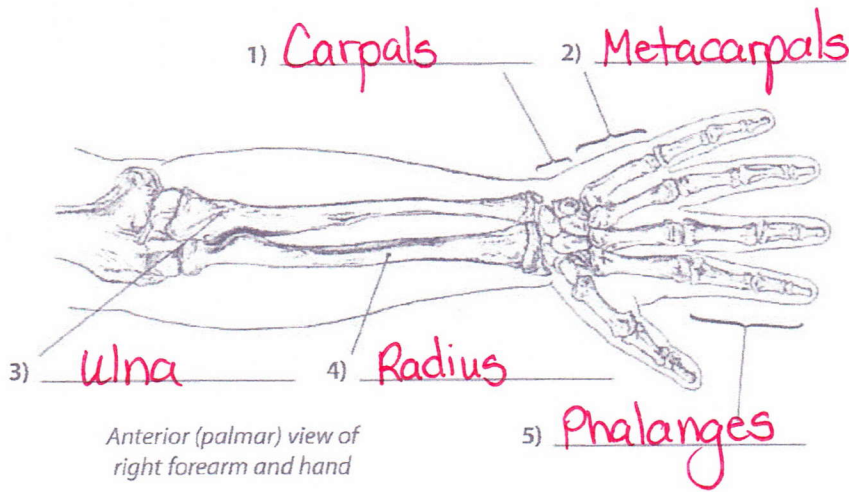
Forearm & Hand



- CHOICES**
- Deltoid tuberosity (2)
 - Greater tubercle (2)
 - Head of humerus (2)
 - Intertubercular groove
 - Lateral epicondyle (2)
 - Lateral supracondylar ridge (2)
 - Lesser tubercle
 - Medial epicondyle (2)
 - Medial supracondylar ridge (2)
 - Olecranon fossa



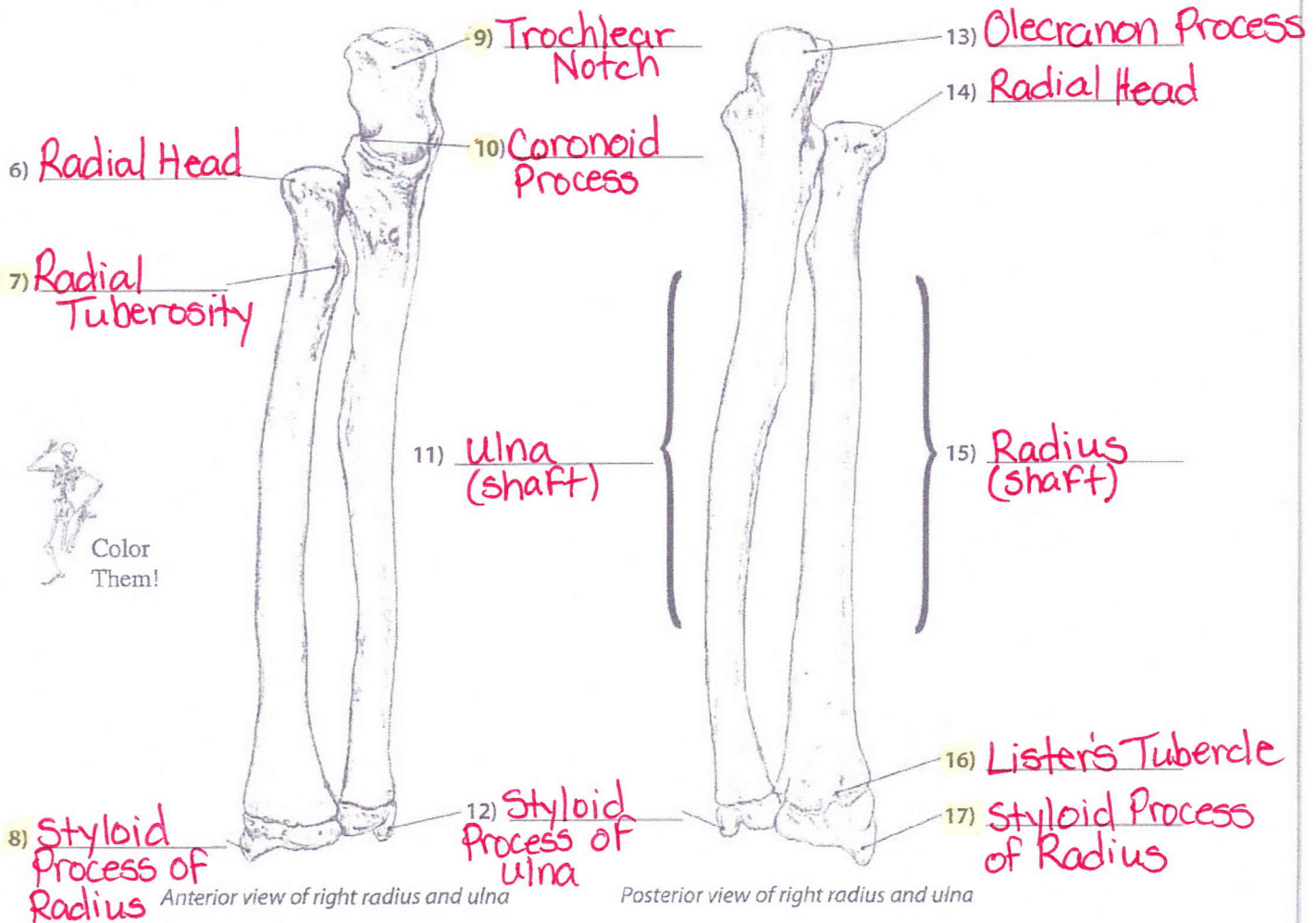
Please identify the following bones. (Questions 1-5)



CHOICES

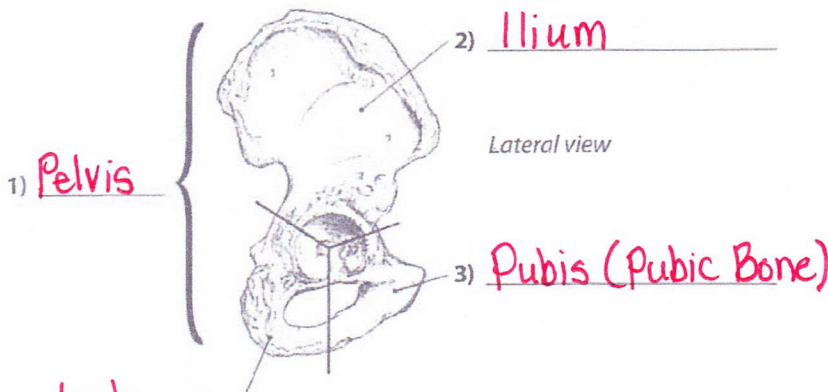
- Carpals
- Coronoid process
- Head of the radius (2)
- Lister's tubercle
- Metacarpals
- Olecranon process
- Phalanges
- Radial tuberosity
- Radius
- Shaft of the radius
- Shaft of the ulna
- Styloid process of the radius (2)
- Styloid process of the ulna
- Trochlear notch
- Ulna

Please identify the following bony landmarks. (Questions 6-17)

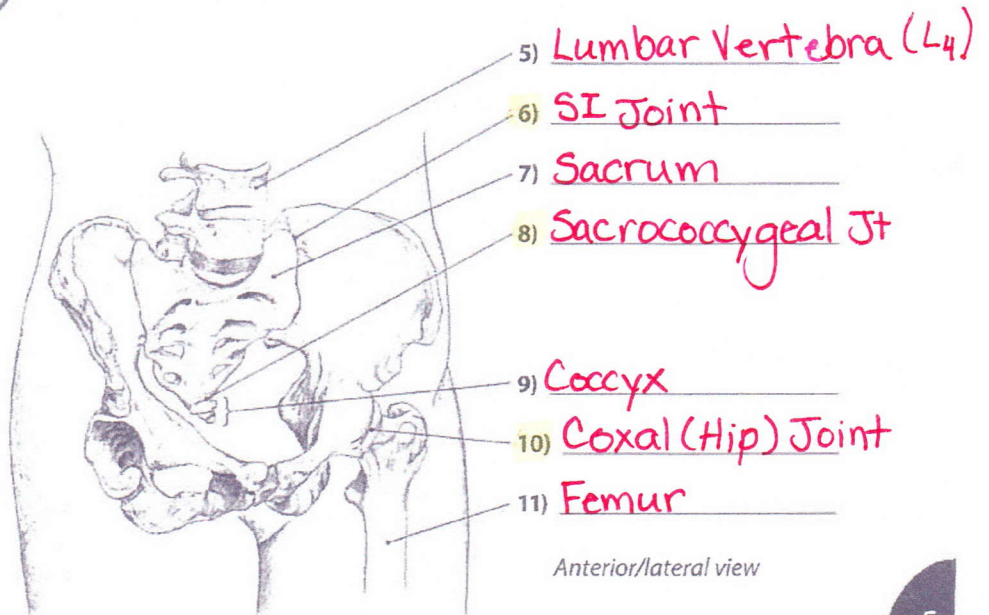




Please identify the following structures.
Numbers in **black** indicate bones,
numbers in **red** are bony landmarks.



4) Ischium



5) Lumbar Vertebra (L4)

6) SI Joint

7) Sacrum

8) Sacrococcygeal Jt

9) Coccyx

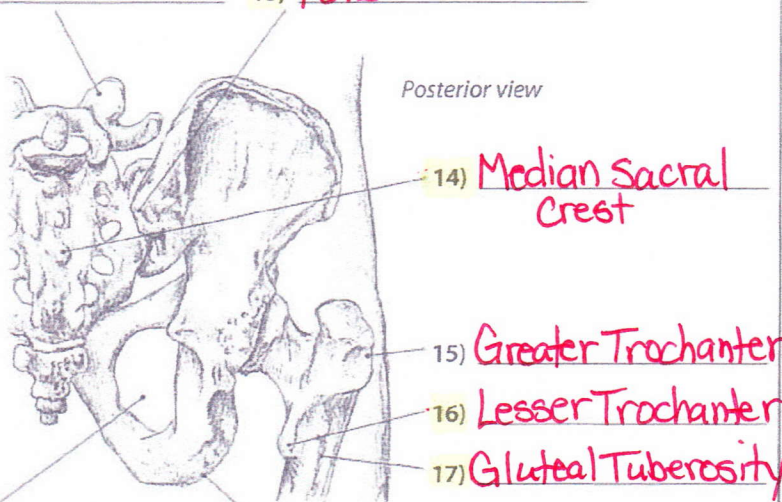
10) Coxal (Hip) Joint

11) Femur



Anterior/lateral view

12) L5 13) PSIS



14) Median Sacral Crest

15) Greater Trochanter

16) Lesser Trochanter

17) Gluteal Tuberosity

19) Obturator Foramen

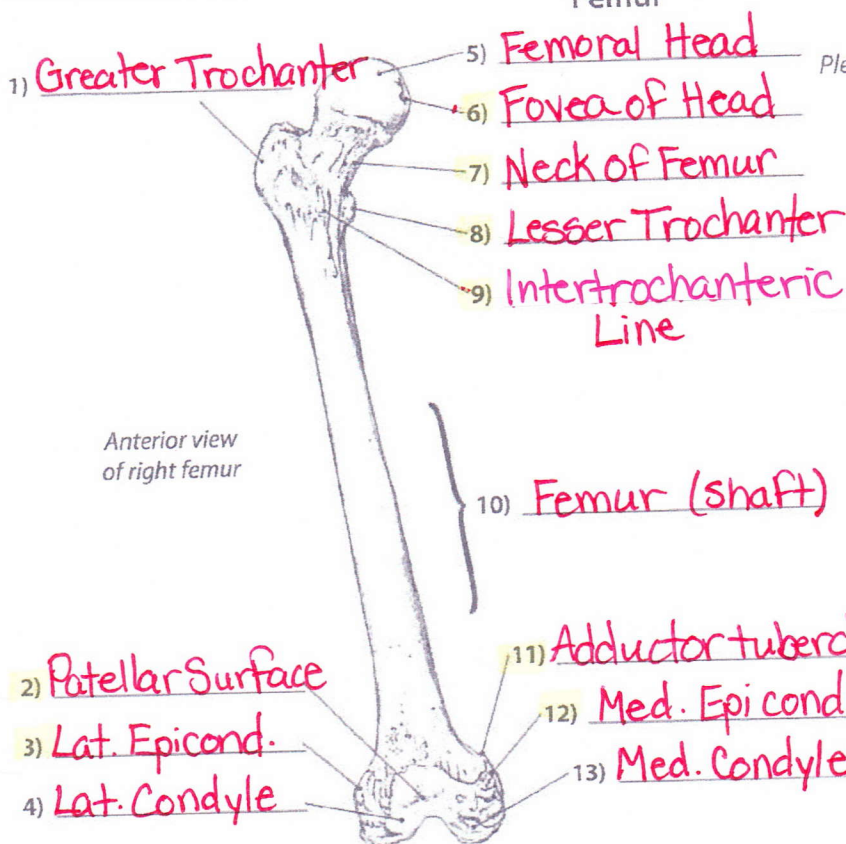
18) Ischial Tuberosity

CHOICES

- Coccyx
- Coxal (hip) joint
- Femur
- Fifth lumbar vertebra
- Gluteal tuberosity
- Greater trochanter
- ~~Hip - Pelvis~~
- Ilium
- Ischial tuberosity
- Ischium
- Lesser trochanter
- Lumbar vertebra
- Median sacral crest
- Obturator foramen
- Posterior superior iliac spine (PSIS)
- Pubis
- Sacrococcygeal joint
- Sacroiliac joint
- Sacrum



Femur

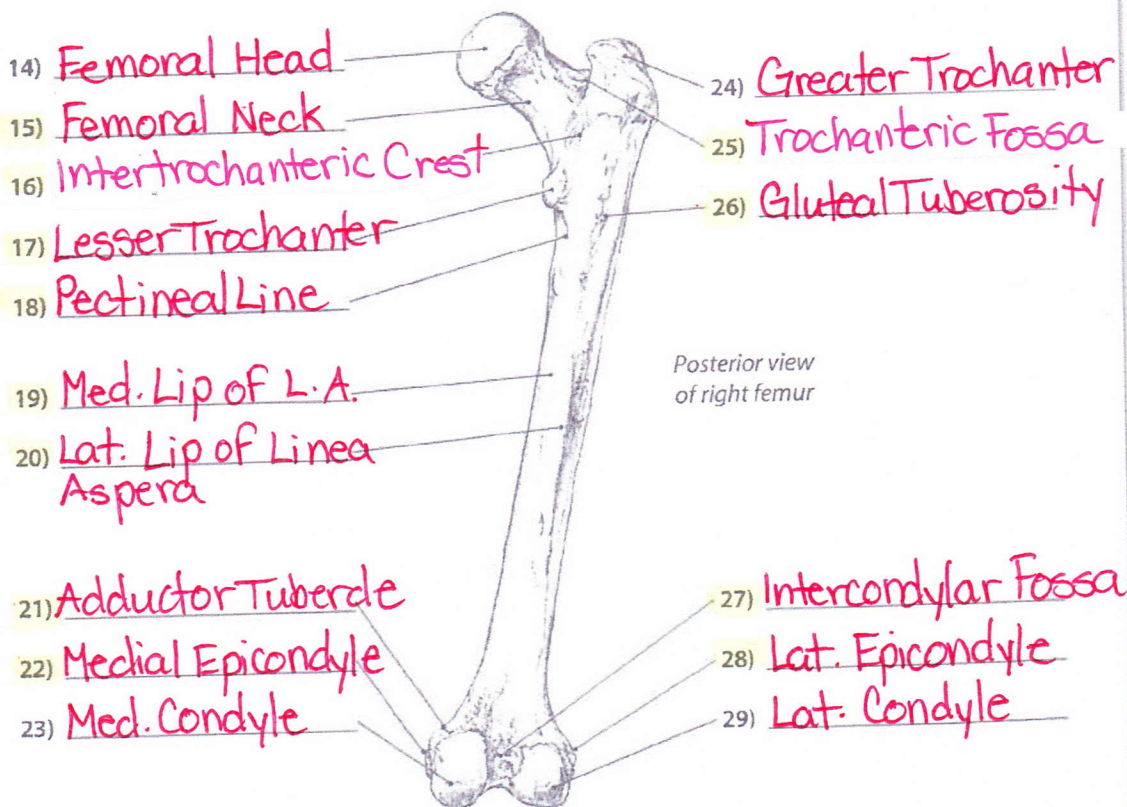


Please identify the following structures.

CHOICES

- Adductor tubercle (2)
- Fovea of head
- Gluteal tuberosity
- Greater trochanter (2)
- Head (2)
- Intercondylar fossa
- Intertrochanteric crest
- Intertrochanteric line
- Lateral condyle (2)
- Lateral epicondyle (2)
- Lateral lip of linea aspera
- Lesser trochanter (2)
- Medial condyle (2)
- Medial epicondyle (2)
- Medial lip of linea aspera
- Neck (2)
- Patellar surface
- Pectineal line
- Shaft
- Trochanteric fossa

Pelvis & Thigh



Leg and Foot

Bones of the Knee, Leg and Foot

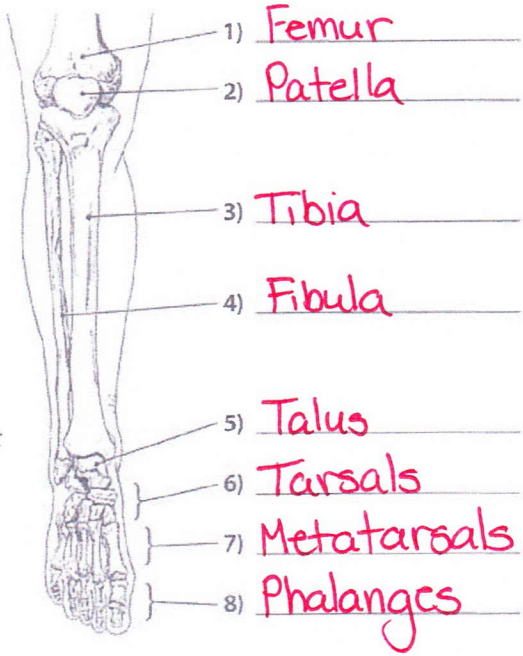


Please identify the following **bones**.
(Questions 1-8)



Color Them!

Anterior view of right knee, leg and foot, foot plantar flexed



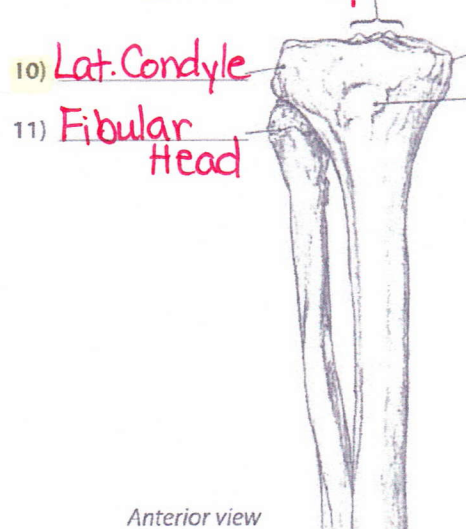
- 1) Femur
- 2) Patella
- 3) Tibia
- 4) Fibula
- 5) Talus
- 6) Tarsals
- 7) Metatarsals
- 8) Phalanges

CHOICES

- Femur
- Fibula
- Fossa of lateral malleolus
- Head of the fibula
- Lateral condyle (2)
- Lateral malleolus (2)
- Medial and lateral intercondylar tubercles
- Medial condyle
- Medial malleolus (2)
- Metatarsals
- Patella
- Phalanges
- Soleal line
- Talus
- Tarsals
- Tibia
- Tibial tuberosity

Please identify the following **bony landmarks**. (Questions 9-20)

9) Med. and Lat. Intercondylar Tubercles



- 10) Lat. Condyle
- 11) Fibular Head
- 13) Med. Condyle
- 14) Tibial Tuberosity
- 15) Soleal Line



- 19) Lat. Condyle
- 16) Med. Malleolus
- 17) Med. Malleolus
- 18) Lat. Malleolar Fosa
- 20) Lat. Malleolus

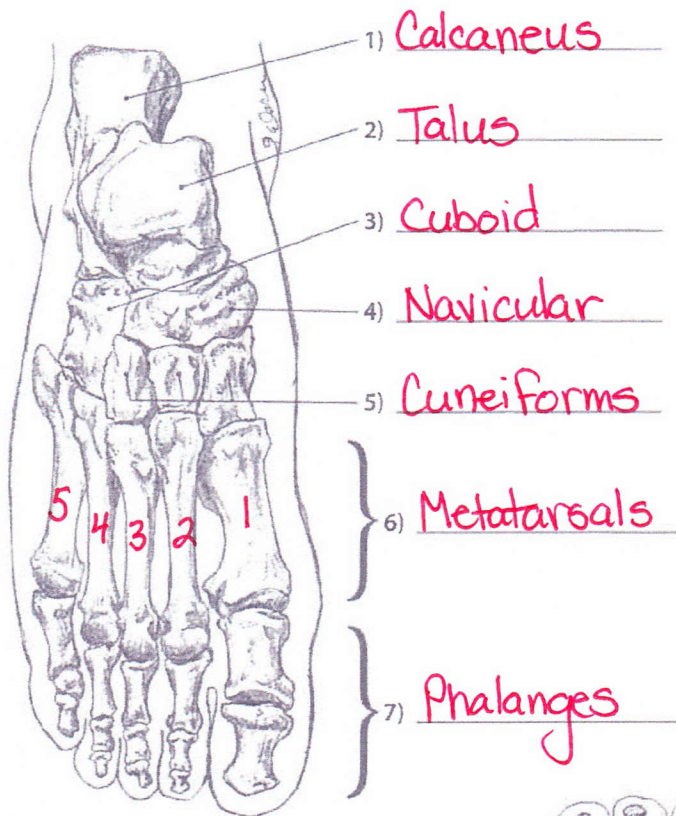
Anterior view

Posterior view

Leg & Foot

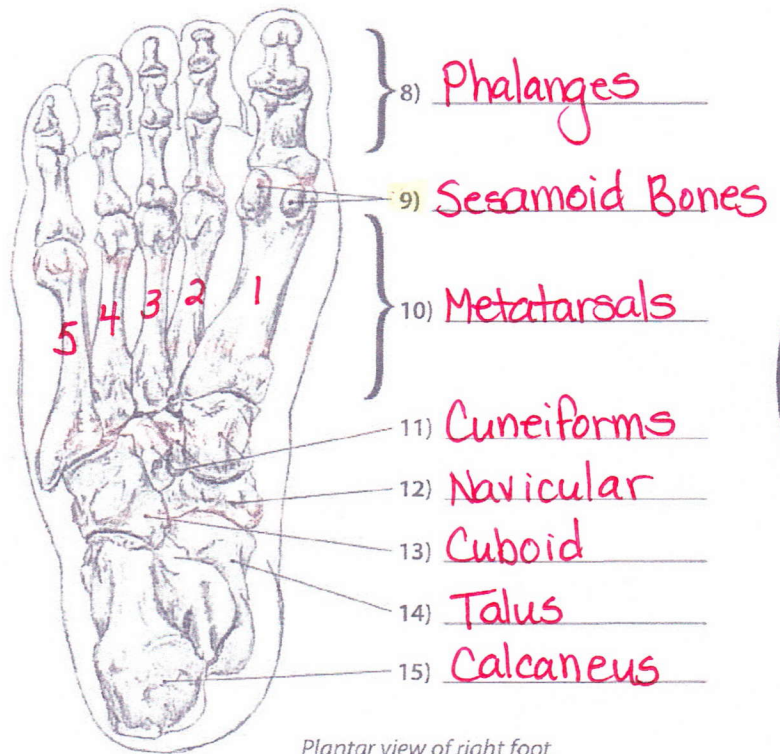


Please identify the following structures.



Dorsal view of right foot

- CHOICES**
- Calcaneus (2)
 - Cuboid (2)
 - Cuneiforms (2)
 - Metatarsals (2)
 - Navicular (2)
 - Phalanges (2)
 - Sesamoid bones
 - Talus (2)



Plantar view of right foot